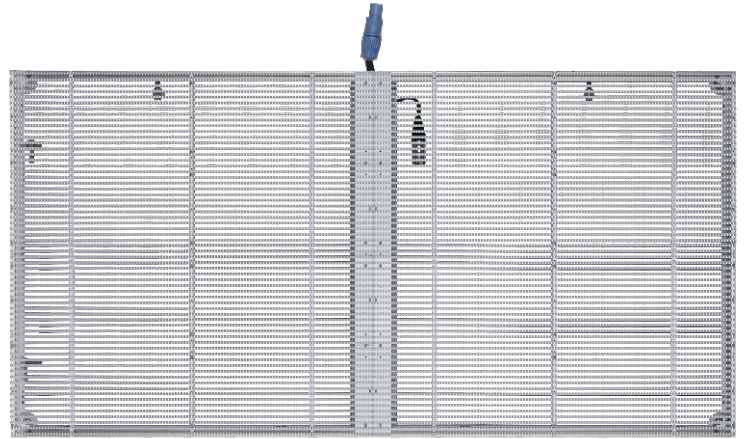


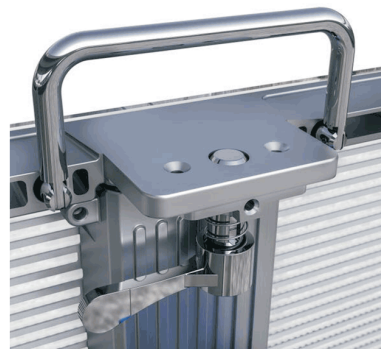
# HTJ LED-Transparent LED Display

## Product Introduction of Transparent LED Display

Shenzhen HTJ Technology Co., Ltd. is a professional LED display manufacturer, which has years of experience for transparent LED display. Transparent LED display from HTJ, based on functions of traditional LED display, is an innovative LED display and can provide you with more humanized and optimized solutions, showing smooth 3D colorful videos and HD pictures, bringing you different visual impact.



## Details of Transparent LED Display



# The Advantages of Transparent LED Display

## ① High Transparency

The light transmittance is between 50%-90%, which allows the glass to retain the function of lighting perspective.

## ② Small Occupied Space

The thickness of the screen main board is only 10mm. Thinner cabinet merely takes advantage of small installation space.

## ③ Light Weight

Screen weight is only 14kg/m<sup>2</sup>, the load requirement for the glass curtain wall is very small.

## ④ Ultra-thin design

perfect integration of screen and building.

## ⑤ Saving Installation Cost

Light weight and fast simple installation design with simple steel frame structure.

## ⑥ Convenient and Fast Maintenance

Indoor maintenance, faster and safer, saving manpower and material resources.

## ⑦ Cost-saving for Building Lighting

Cabinet is designed with light bar, and its lighting trait saves the lighting fixture of the exterior wall. Meanwhile.

## ⑧ Energy-saving and Environmentally Friendly

No need traditional refrigeration systems and air conditioning cooling, saving more than 50% energy compared with traditional display.

## ⑨ Easy and Simple for Control

It can connect to the computer, graphics card, remote transceiver through the network cable, and also change the display contents anytime through remote cluster wireless control.

## ⑩ Neat and Beautiful Appearance

The power cable is built inside and module size is standard, which makes the whole screen more beautiful and generous.

## Segmental Parameters of Transparent LED Display

Segmental Parameters					
Pixel Pitch(mm)	P3.9-7.8	P7.81-7.81	P10.4	P16	P20
LED Encapsulation	SMD1921(Anti-UV)	SMD1921(Anti-UV)	SMD1921(Anti-UV)	SMD3535	SMD3535
Scan Mode	7 scan	8 scan	6 scan	Static	Static
Module Resolution(dots)	126*32	96*48	60*30	30*10	24*8
Module Pixel Density(dots)	4032	4608	4608	300	192
Cabinet Size (m2)	1000*500	1000*500	1000*500	960*960	960*960
Cabinet Resolution (m2)	252*64	192*96	120*60	60*60	48*48
Transmittance	≥70%	≥90%	≥95%	≥75%	≥80%
Module Quantity(pcs)	8	4	8	12	12
Pixel Density (dot/m2)	32256	16384	9216	3906	2500
Cabinet material	Aluminum profile	Aluminum profile	Aluminum profile	Aluminum profile	Aluminum profile
Cabinet weight(kg)	7	7	7	7.5	7
Brightness (cd/m2 )	3000	2500	2500	4000	3000
View Angle(Horizontal/Vertical)	140°/140°	140°/140°	140°/140°	140°/140°	140°/140°
Minimum Viewing Distance(m)	≥4	≥8	≥10	≥10	≥10
Gray Level (bit)	16	16	16	16	16
Refresh Rate (Hz)	>1920	>1920	>1920	>1920	>1920
Frame Change Frequency(fps)	60	60	60	60	60
Input voltage(V/Hz)	86-264/60	86-264/60	86-264/60	86-264/60	86-264/60
Power Consumption(Max/Avg)(w/m2)	800/240	393/157	294/117	294/117	294/117
Weight (kg/m2)	9.5	9.5	9.5	10	9.5
Mean Time Between Failures(H)	>10,000	>10,000	>10,000	>10,000	>10,000
Lifetime(H)	≥100,000	≥100,000	≥100,000	≥100,000	≥100,000
IP Protection level	IP43	IP43	IP43	IP43	IP43
Temperature(°C)	- 20~60 / - 40~60	- 20~60 / - 40~60	- 20~60 / - 40~60	- 20~60 / - 40~60	- 20~60 / - 40~60
Working Humidity(RH)	10%-85%	10%-85%	10%-85%	10%-85%	10%-85%
Operating System	Nova/Linsn/Mooncell	Nova/Linsn/Mooncell	Nova/Linsn/Mooncell	Nova/Linsn/Mooncell	Nova/Linsn/Mooncell

## Projects of Transparent LED Display

**A Wide Range of Applications:** This product can be used for any glass curtain walls, such as banks, shopping malls, theaters, commercial streets, chain stores, hotels, building curtain walls, automobile 4S shops, municipal public buildings, landmark buildings, glass windows alongside the street for displaying products, exhibition windows for exhibits, pictures, etc.

