

# MyHealthMath

Reimagining a healthcare market  
where no dollar is wasted, and no  
person is lost.



## Table of Contents

Our Company	03
Our Solutions	04
Our Difference	05
Our Clients Said	06

### Company Information:

One Monument Way, Suite 250  
Portland, ME 04101

Phone: + 207-888-3699

Email: [communications@myhealthmath.com](mailto:communications@myhealthmath.com)  
Website: [www.myhealthmath.com](http://www.myhealthmath.com)

### Company Contacts:

Chief Executive Officer:  
Bob Watterson  
Email: [bwatterson@myhealthmath.com](mailto:bwatterson@myhealthmath.com)

VP, Marketing and Strategic Partnerships:  
Caitlin Forbes  
Email: [cforbes@myhealthmath.com](mailto:cforbes@myhealthmath.com)

# Our Company

Every year, employers and employees collectively waste millions of dollars because there is no easy way for individuals to choose a cost-effective health plan.

**W**hen individuals choose the wrong health plan, everyone loses. **Consumers** lose money on high health insurance premiums and lose faith in the healthcare system.

**Employers** lose money on premiums and the trust of employees who are fed up with rising insurance costs. In turn, **health carriers** lose clients to competitors who offer better pricing.

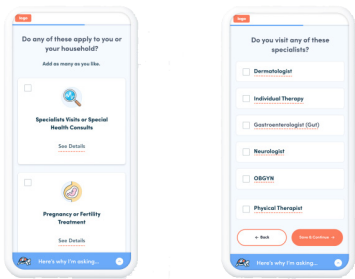
MyHealthMath addresses each of these pain points by solving the root problem: We help consumers choose the health plan that best covers their specific health needs. We stand out by offering more than health plan decision support; we provide personalized guidance that people actually trust. Our focus on individual support, education, and transparent data builds trust, so people believe our guidance, make a change and choose a better plan.

Our goal is to give every employee in the U.S. the opportunity to use our decision support. That's why we've developed solutions that help all stakeholders—employees, employers, health carriers, and benefit administrators—save when employees make better plan choice decisions. **Together**, we can create a domestic healthcare market where no dollar is wasted and no person is lost.



# Our Solutions

MyHealthMath helps everyone save when employees choose a more cost-effective health plan.



## Decision Doc

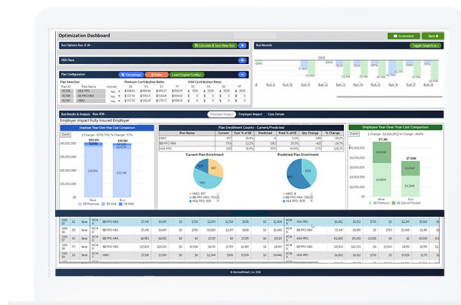
Employees received personalized plan choice guidance based on their specific health needs and claims data. Decision Doc includes phone and online support and customizable education modules.

### Who it helps:

**Employees** save on health care costs.

**Employers** save on premiums and payroll taxes.

**Carriers** save on administrative costs and increase member satisfaction.



## Benefits Optimization System

Our predictive analytics system shows which health plan employees will choose with Decision Doc. Based on these predictions, employers and carriers can optimize plan design and pricing to maximize savings for all stakeholders.

### Who it helps:

Greater potential savings for **employees** and **employers**.

Allows **self insured employers** and **carriers** to save when employees choose a lower premium plan.



## Equity and Inclusion Analysis

Learn whether all employees can benefit from the health insurance their employer offers. Then use MyHealthMath's products to advance access and equity through education and plan design changes.

### Who it helps:

Protects the health of **all employees**.

**Employers** build a more inclusive workplace that values every employee's health.

*All products deliver competitive advantage for carriers and benefit administrators.*

# Our Difference

With four simple steps, we deliver decision support that employees trust, so they make a change and everyone saves.



Personalized Guidance



Personal Support



Education



Cost Transparency

## Personalized Guidance

Our health plan guidance is based on each employee's specific healthcare usage—captured through a series of questions about their health needs, which can be supplemented with individual claims data. We go deeper because we know this builds trust.

## Personal Support

Live analysts are available at every step. Employees can schedule a call to share their health needs and have a live person walk them through their health plan comparison report. Giving employees a little extra TLC empowers them to make a change.

## Education

Access customizable education about HSAs and FSAs, as well as resources on preventive health benefits and health insurance terminology. When employees feel confident about their plan choice, they start the year prepared.

## Cost Transparency

We show employees how we calculate their costs, so they understand the numbers and believe in our guidance. We're completely agnostic and never try to push employees toward a specific plan.

**95%**

employee satisfaction

**3X**

increase in optimal plan choice

**\$1,300**

savings per employee

# Our Clients Said



“Employees loved the online experience. It was incredibly easy to use; the estimate was easy to understand; and employees had nothing but positive things to say! Overall, MyHealthMath made open enrollment easier for HR and led to really happy employees.”

---

## Horizon Therapeutics

Manager, Benefits and Wellness

“MyHealthMath’s benefits optimization system has been an important asset for my clients. Its health plan modeling lets me review potential plan structure optimizations with my clients in real time using client-specific data, which has really helped inform their strategic planning.”

---

## HUB International

SVP, Employee Benefits

“MyHealthMath has a unique and differentiated solution to decision support that also helps employers tailor their benefit offerings for the most cost-effective outcome. It is different than anything else we’ve seen on the market. It has a depth of granularity that gives employees and employers unique insight into their health insurance spend—and that drives really significant savings.”

---

## Major Health Carrier

CEO

## **Get In Touch**

One Monument Way, Suite 250  
Portland, ME 04101

Phone : + 207-888-3699

Email : [communications@myhealthmath.com](mailto:communications@myhealthmath.com)  
Website : [www.myhealthmath.com](http://www.myhealthmath.com)