



# MATRIX 500

Innovative indoor & outdoor LED Panel

**DOIT VISION** | 2020 **D**reaming | **O**penness | **I**magination | **T**rust

Professional LED screen manufacturer [www.doitvision.com](http://www.doitvision.com)

---

 The MATRIX 500





## The **INSPIRATION**

Texture

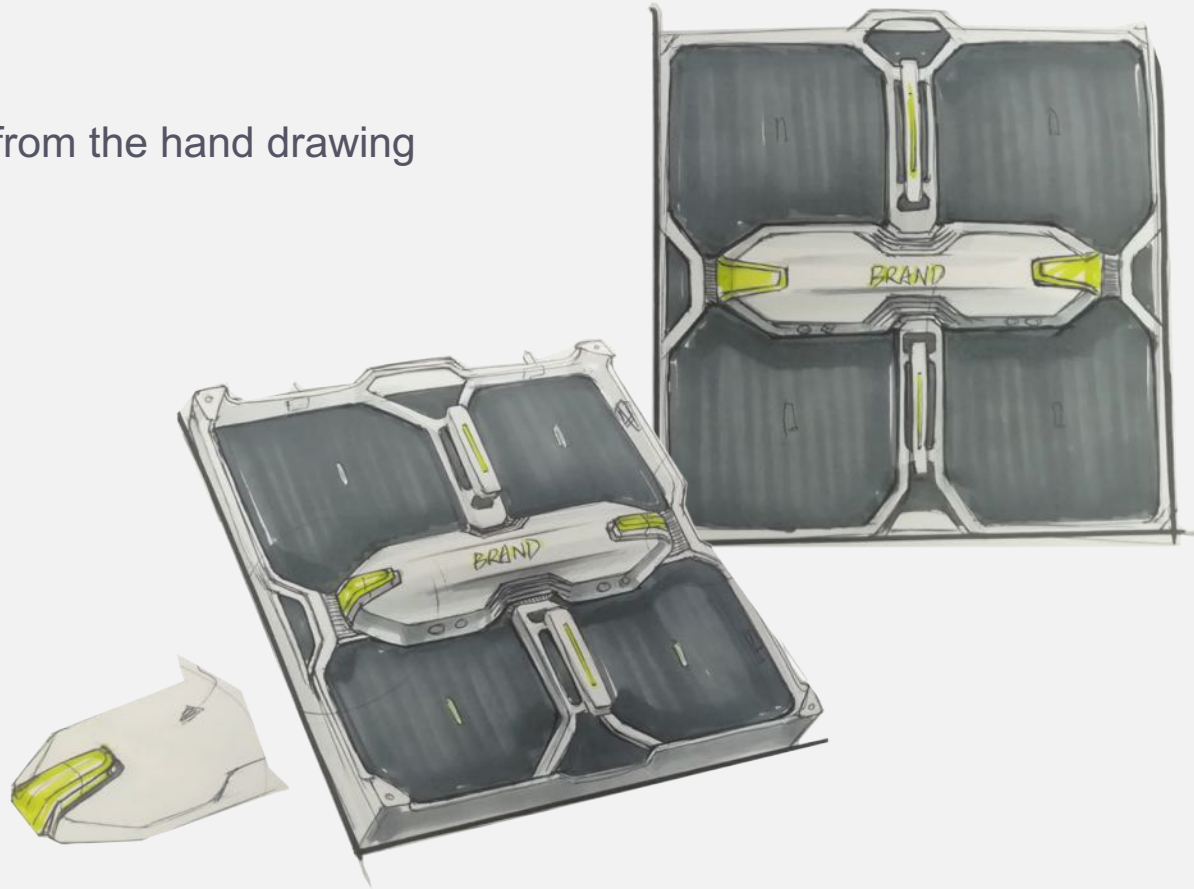
Nimble

Professional

Flat

Handy

Started from the hand drawing



 The MATRIX 500



SOLID

EASY

SIMPLE

PRECISE

FAST



 The MATRIX 500



INDOOR:

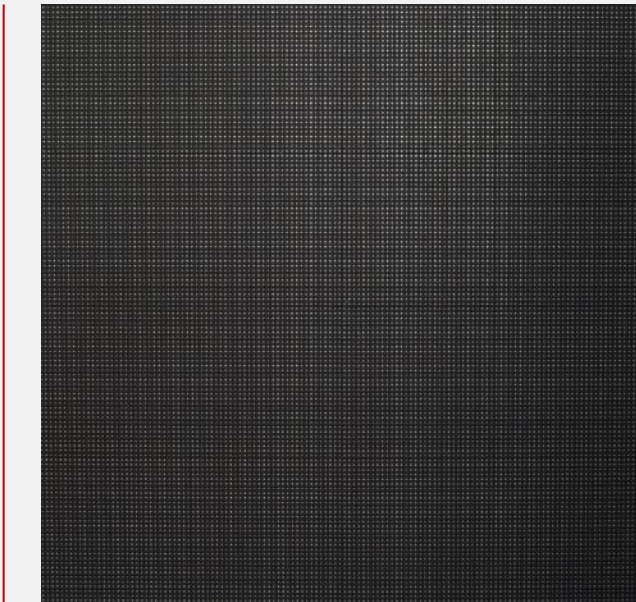


OUTDOOR



 The MATRIX 500

500mm



Weight: 7.1kg indoor / 7.5kg outdoor



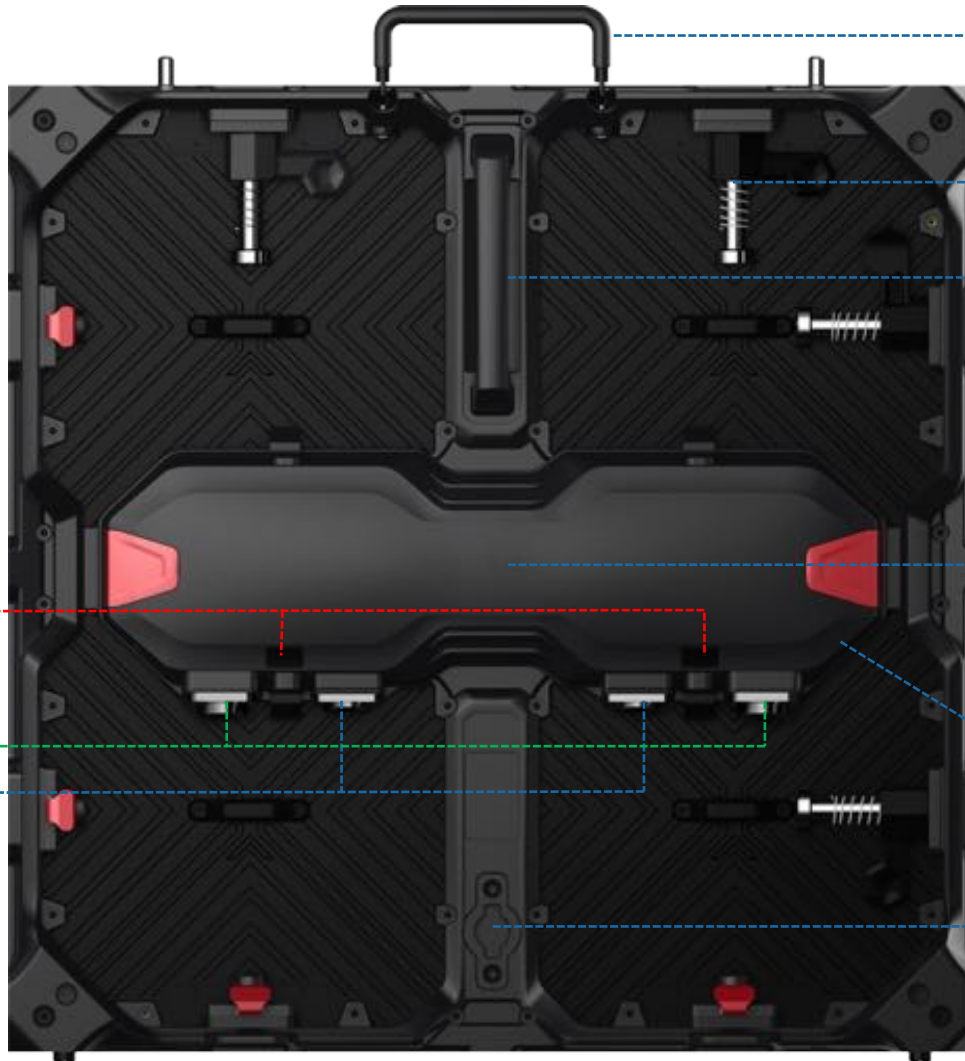
80mm



500mm



 The MATRIX 500



Lifting Handle

Fast locks

Panel Handle

Removable  
Power & Receiving box

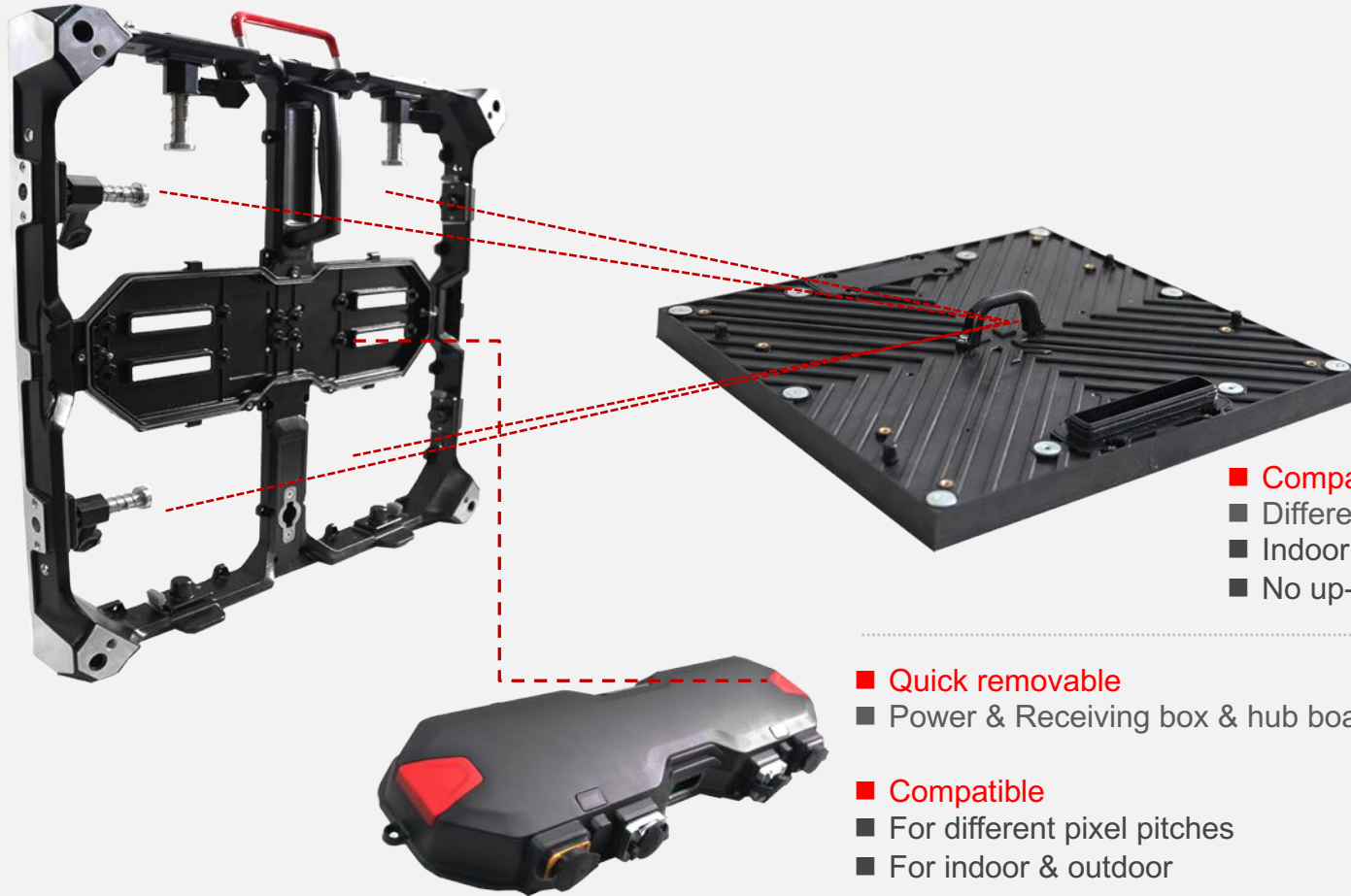
Hidden testing button

Stack installation joggle

Power & signal indicator

Power connector  
Signal connector

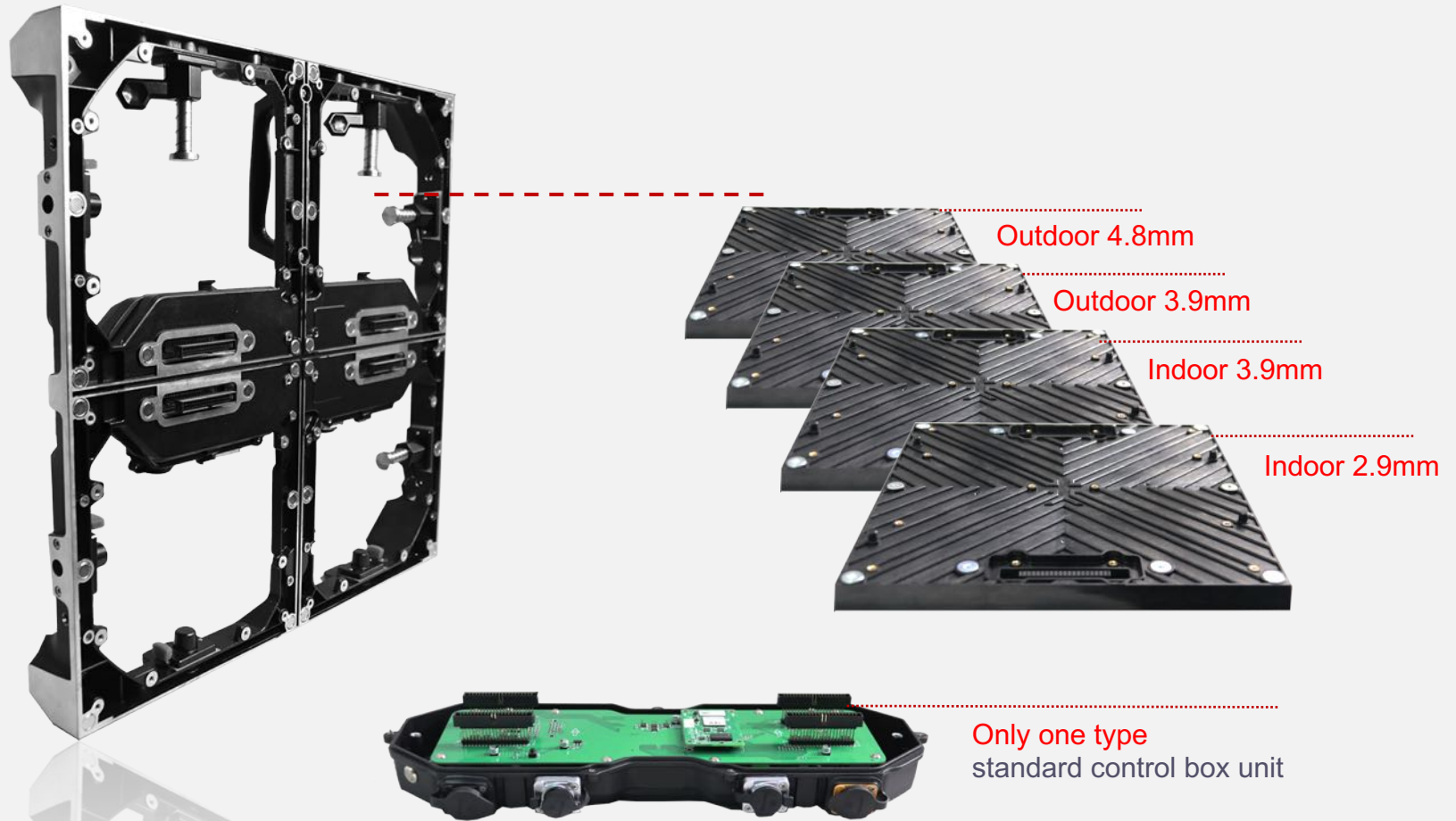




- **Compatible LED module**
- Different pixel pitches
- Indoor & outdoor
- No up-down direction

- 
- **Quick removable**
  - Power & Receiving box & hub board & connectors

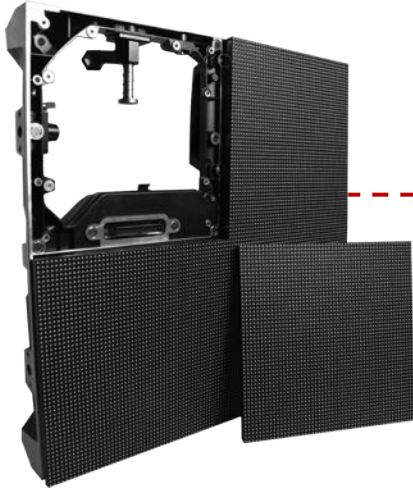
- **Compatible**
- For different pixel pitches
- For indoor & outdoor





- 
- Powerful Electronic Vacuum suction tool (front maintenance)





■ Magnetic front service or Back service with screw



- Strong handle for LED module
- 10 magnetics for each LED module
- Strong installation pins, metal material optional



- ✓ Black LED, high contrast ratio
- ✓ High refresh rate, no ghosting
- ✓ Calibration memory in LED module
- ✓ No AB module(no up and down direction installation)
- ✓ Superb visual quality, zero-gap alignment
- ✓ Superb surface flatness
- ✓ Perfect alignment no gaps
- ✓ Magnetic front service (Screw optional)
- ✓ Strong magnetics
- ✓ Strengthen housing structure design, no deformation
- ✓ Optimized heat sinking design
- ✓ Anti fire / corrosion / ultra-violet material





- Mask with screws
- Convex surface
- No deformation
- Strengthen edges

- High uniformity
- High contrast ratio
- Superb flatness
- Superb alignment

- Big viewing angle
- Anti-collision protection for LEDs





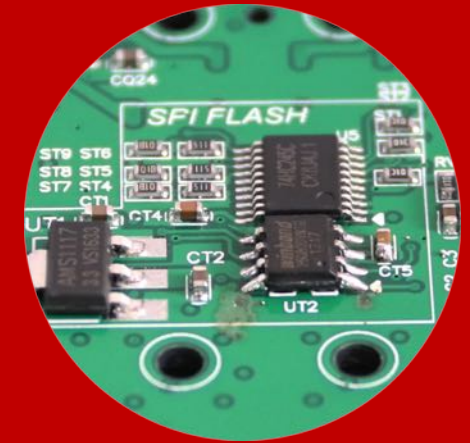
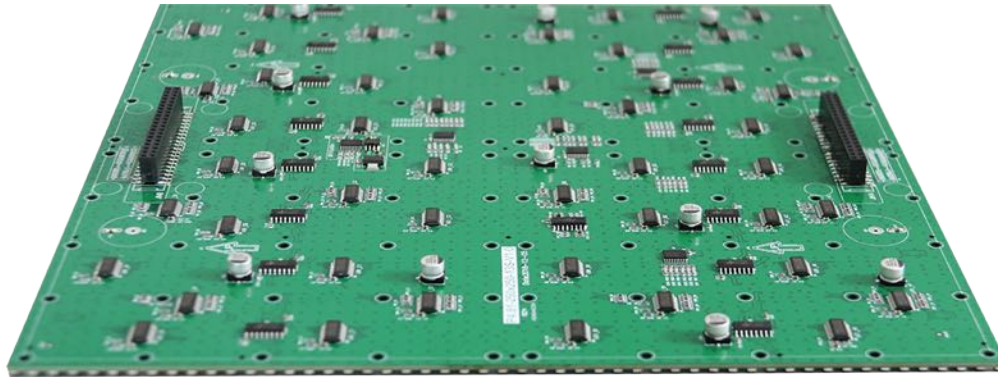
## SINGLE PERSON Installation



**Human engineering design**  
Rubber protection  
User friendly  
Bigger size

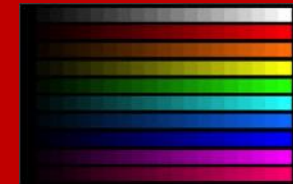
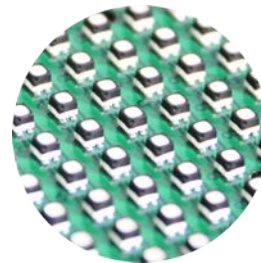






Calibration memo in LED module

- ✓ Optimized PCB board design
- ✓ 4 layers PCB
- ✓ Calibration-memo in PCB board
- ✓ Perfect matched with Novastar control system
- ✓ Perfect heat sinking
- ✓ CE / EMC certified optional



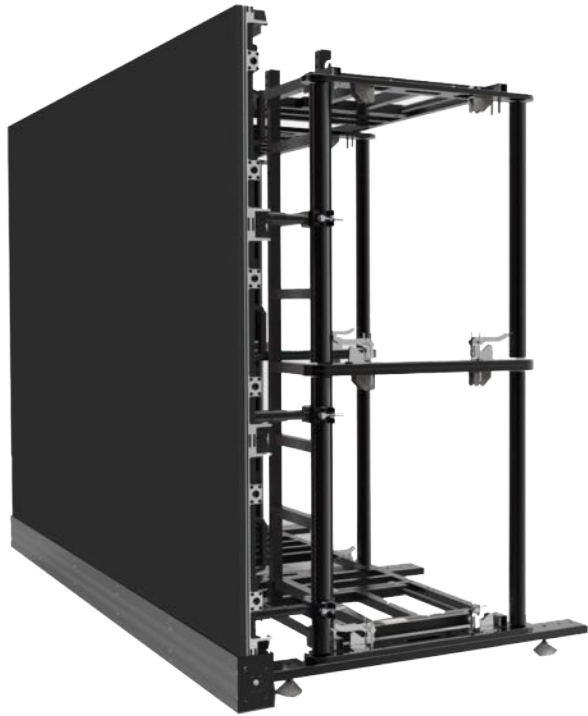
**CALIBRATION**



## The control box

---


- ✓ Power supply with certificated
- ✓ Novastar receiving card
- ✓ Universe hub board for different pixel pitches
- ✓ No cable connection for power supply & hub board
- ✓ Good quality connector pins
- ✓ Optimized heat sinking design
- ✓ Big size indicator, visible under sunshine
- ✓ Direct signal connection to hub(receiving card) optional
- ✓ Quick removable without any tools optional
- ✓ Customized color sign
- ✓ Neutrik connectors optional
- ✓ Hidden testing button avoid false touch

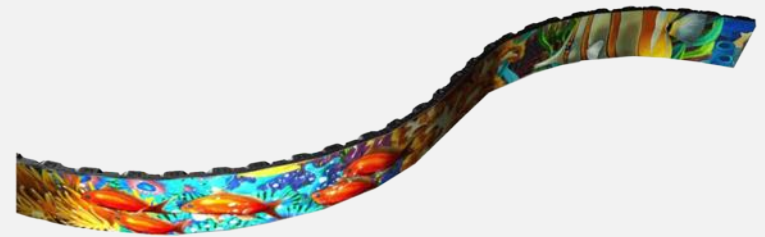


Ground Stack Installation



Hanging Installation

 The MATRIX 500



Hanging installation | Concave & convex installation





Special shape / Panel Dislocation Installation



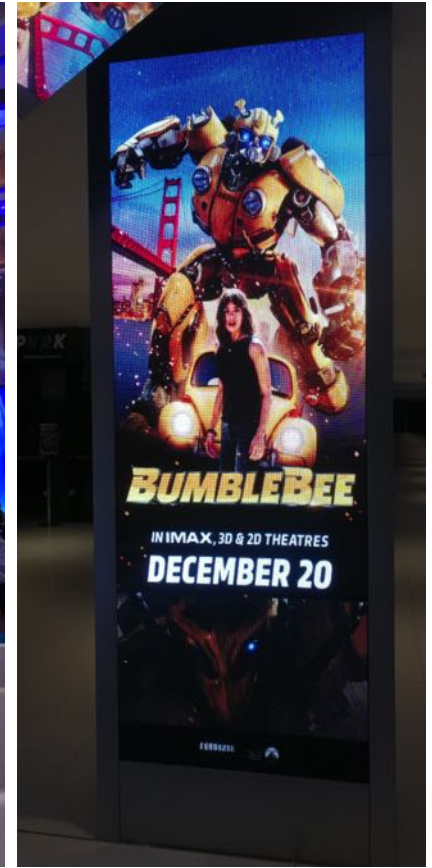
EVENTS



OUTDOOR SHOW

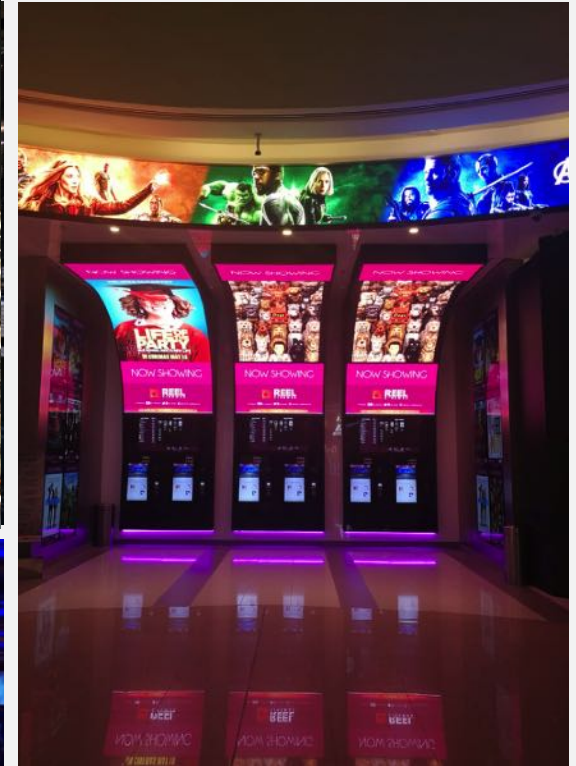


CONFERENCE



ADVERTISING





## PROJECT GALLERIES



## Specification for indoor models

Pixel pitch	2.6mm	2.9mm	3.9mm
LED configuration	SMD1515	SMD2020	SMD2020
Brightness	1000 nits	1000 nits	1200 nits
Viewing angle	160° / 160° (50% brightness)		
Scan mode	1/24	1/28	1/16
Refresh rate	1920/3840Hz		
Processing	14 bits		
Module size	250mm x 250mm x 17mm (W x H x D)	9.84" x 9.84" x 0.67" (W x H x D)	
Panel size	500mm x 500mm x 78mm (W x H x D)	19.69" x 19.69" x 3.07" (W x H x D)	
Panel weight	7.1kg / 15.65lbs	7.3kg / 16.09 lbs	7.1kg / 15.65lbs
Input voltage	AC100~240V 50/60 HZ		
Power consumption (Avg)	200W/sqm	200W/sqm	200W/sqm
Power consumption (Max)	640W/sqm	640W/sqm	680W/sqm
Working temperature	-20°C~60°C		
IP rating	IP31/IP31		
Life span	100,000 hrs		
Warranty	24 months		

## Specification for outdoor models

Pixel pitch	2.9mm	3.9mm	4.8mm
LED configuration	SMD1415(Outdoor)	SMD1921/SMD1820	SMD1921/SMD1820
Brightness	4200 nits	4000 nits	4000nits
Viewing angle	160° / 160° (50% brightness)		
Scan mode	1/21	1/16	1/13
Refresh rate	1920/3840Hz		
Processing	14 bits		
Module size	250mm x 250mm x 17mm (W x H x D)	9.84" x 9.84" x 0.67" (W x H x D)	
Panel size	500mm x 500mm x 78mm (W x H x D)	19.69" x 19.69" x 3.07" (W x H x D)	
Panel weight	7.8kg / 17.19lbs	7.8kg / 17.19 lbs	7.7kg / 16.97lbs
Input voltage	AC100~240V 50/60 HZ		
Power consumption (Avg)	200W/sqm	200W/sqm	200W/sqm
Power consumption (Max)	640W/sqm	640W/sqm	680W/sqm
Working temperature	-20°C~60°C		
IP rating	IP65/IP65		
Life span	100,000 hrs		
Warranty	24 months		



## DOIT VISION 2020

Dreaming | Openness | Imagination | Trust  
[www.doitvision.com](http://www.doitvision.com)

Add: 3/4<sup>th</sup> floor, No.8 Xinghu Rd, Hongxing Dist.,  
gongming town, Guangming Dist, Shenzhen  
518106



+86-755-2324-4670



+86186 6580 0742



[info@doitvision.net](mailto:info@doitvision.net)