



Analytics Widget App



Integrate. Collaborate. Analyze.



Integrate

The Analytics Widget seamlessly integrates with existing internal systems providing direct access to a diverse repository of IP data with custom analytics.

Collaborate

User-based access enables high levels of collaboration while minimizing time spent on research. Set up recurring, live data updates to provide quick team access from your local computer, shared drive, intranet, or CRM.

Execute your strategy with high levels of confidence and collaboration by leveraging live, shareable global IP analytics.

Every organization contains several types of technology users. From reviewing a snapshot of live analytics, to accessing the full platform for deeper analysis - the ktMINE Analytics Widget App is the custom solution to strengthen competitive intelligence across teams from a familiar user interface.

Analyze

Share and view analytics from an existing environment or jump to the ktMINE platform for deeper analysis. ktMINE visualizations offer insight into trends within the entire IP landscape.

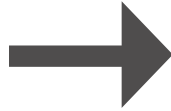




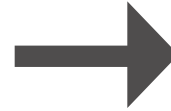
Quick and seamless integration.



Login

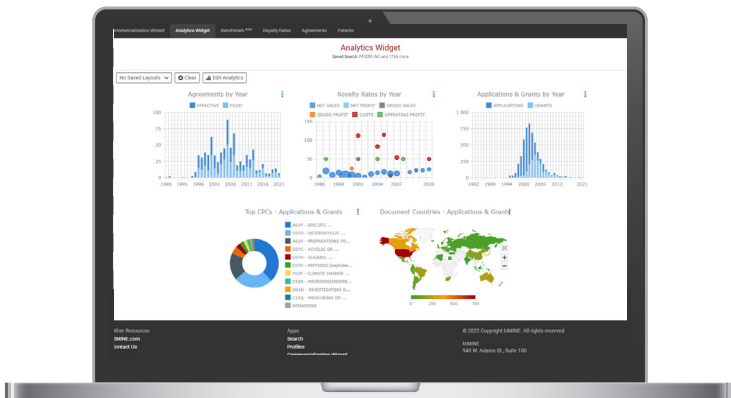


Select
Analytics



Embed and Export
for Intranets

Key Features



- ▶ Access seven datasets with over preloaded 100 visualizations for your analysis
- ▶ Easily embed code for quick set up and use
- ▶ No need to refresh or reshare, your analytics are updated in real-time

Contact Us.

Schedule a demo and discover how the ktMINE Analytics Widget App can streamline your research process.

