



For more information on LED Screens,  
please visit [www.yuchip-led.com](http://www.yuchip-led.com)

SHENZHEN YUCHIP ELECTRONIC CO., LTD  
Address: A3 Building, Fuwei 2nd Industrial Park, Fuyong Town, Bao'an District,  
Shenzhen, 518100, China.  
Tel: +86 755 2359 2989 Fax: +86 755 3350 3179 Email: [marketing@yuchip.com](mailto:marketing@yuchip.com)  
©2021 SHENZHEN YUCHIP ELECTRONIC CO., LTD All Rights Reserved.

Ver.2021

# LED DISPLAY CATALOG

## Creative Series



# OUR WORK

Strive to contribute value to "Show The Wonderful World" by exporting quality LED displays all over the world!

## Who We Are

Founded in 2004, YUCHIP is an award-winning global LED display supplier headquartered in Shenzhen, China. As a comprehensive LED display manufacturer, we focus on offering top-notch technology and high-performing visual products. Our great range of LED displays includes outdoor LED display, indoor LED screen, rental LED display, transparent LED display, LED poster, flexible LED display, HD LED screen, mobile LED video screens, LED wall controller, and more.

## How We Do

YUCHIP owns 15000 square meters of factory area, and every LED display is manufactured by our skilled team using state-of-the-art techniques and equipment. It's then hand-checked against a stringent quality control list to ensure it meets our very high standards. Furthermore, as an LED video wall manufacturer, our management system complies with ISO9001-2015, and the outstanding LED video screens are certified by CE, RoHS, CCC, FCC, TUV, BIS with a 3-5 years warranty.

## Where We Go

Our team of 260 staffs has decades of industry experience that enable us to provide the superb solution for customers pick and choose from. Meanwhile, as LED screen manufacturer, YUCHIP has successfully exported LED displays to over 102 countries worldwide. YUCHIP is committed to supporting customers with responsive service and rapid delivery, so we opened branch offices in Germany, Hungary, and Peru, authorized dealers in America, Italy, Malaysia, and Thailand, etc. The Dubai branch office will also start soon.

Since YUCHIP startup, our mission and delight are to help customers transfer any and every desired space into the digital world.

# Certificates



Workshop pictures



**Automatic production equipment**

We gather a large number of technician and experts with rich experience in LED display, relying on the advanced experimental facilities and automatic product line, it constantly devotes itself to the innovation and upgrade of product so as to give customers stable and optimal visual experience.

# Footprint as Global LED Screen Supplier

Yuchip's quality LED screen has been exported to over 102 countries since 2004.

- 2014, well done the largest outdoor HD LED screen in Hanoi, Vietnam, 140sqm OF P5
- 2015, successfully built the biggest cricket stadium LED display in Hyderabad, India, 185sqm OF P16
- 2016, accomplished the largest LED screen in Latin America located in Lima, Peru, 402sqm OF P16
- 2017, honorably supplied 1.8m LED sphere display and flexible LED screen for World Expo Astana 2017
- 2017, authorized as key LED screen supplier in the 17th Fina World Championship Budapest, 200sqm P4.8 rental LED display, 350sqm P8 perimeter LED screen, and 280sqm P5.95 LED scoreboard
- 2018, ideally supplied and installed the largest group of trailer LED video screen in Berlin, Germany, 655sqm OR P5 in 4 groups
- 2019, successfully manufactured and delivered a 3.6m LED display ball for Argentina National Museum

Whether you are a large organization looking to rebrand multiple locations across the country or a smaller business looking to create one showstopper LED display for your business location, we can help.



## Table Of Contents

LED PostAir-----	01-04
Flexible LED Display-----	05-08
LED Display Ball-----	09-12



Pixel Pitch (PH) — P1.86 — P2 — P2.5

	P1.86	P2	P2.5
Module Size (mm*mm)	320*160		
Module Resolution (pixels)	172*86	180*180	128*64
Cabinet Size (mm*mm)	640*1920		
Scan Mode	1/43	1/40	1/32
Pixel Configuration	3 in 1		
LED lamps	SMD1515		SMD2121
Pixel density (pixel/m <sup>2</sup> )	28888	250000	160000
Brightness (cd/ m <sup>2</sup> )	900		1000
Max Consumption (W/m <sup>2</sup> )	600		
Ave Consumption (W/m <sup>2</sup> )	200		
Cabinet weight (kg)	55		
Maintenance	Real Side		
Cabinet material	Aluminum Profile		
Front/Rear IP Level	IP45		
Color contrast ratio	5000:1		
Gray Grade	16bit		
Refresh Frequency (Hz)	3840HZ		
Repetition Frequency (Hz)	50/60HZ		
View angle(V/H)	160° / 160°		
Best viewing distance (m)	2		2.5
Working Voltage	AC110 / AC220V		
Working temperature( )	-30 ~ +80℃		
Operation humidity (RH)	0-95%		
Display Lifetime (hours)	≥100000		

# LED PostAir



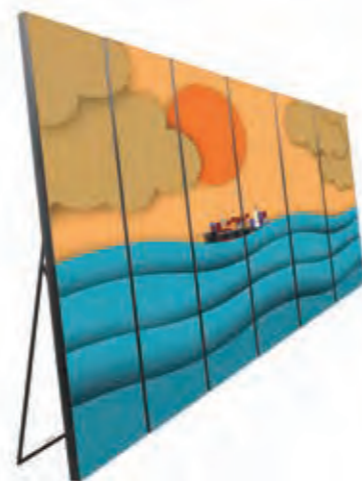
Case show

Features

- High refresh rate
- Remote control
- 4G (Optional)
- Cascade(Optional)
- WIFI
- USB
- Audio
- HDMI



Creative installation



More pcs cascade together installation ( max 6pcs)



P2.5 PostAir In Malaysia



P2.5 PostAir In USA



Hanging



Stand with wheels,easy move



Diagonal brace



P3 PostAir In Spain



P2.5 PostAir In Hungary

# Indoor Flexible/soft module

Realize your creative displays dream



Pixel Pitch (PH) — P1.875 — P2 — P2.5 — P3 — P4

Pixel Pitch (PH)	P1.875					P2	P2.5	P3	P4
Module Size (mm*mm)	240*120								
Module Resolution (pixels)	128*64		120*60		96*48		80*40		60*30
Cabinet Size (mm*mm)	Customized								
Scan Mode	1/32		1/30		1/24		1/20		1/5
Pixel Configuration	3 in 1								
LED lamps	SMD1212		SMD1515				SMD2121		
Pixel density (pixel/m <sup>2</sup> )	284444		250000		160000		111111		62500
Brightness (cd/ m <sup>2</sup> )	900		1000						
Max Consumption (W/m <sup>2</sup> )	540		600						
Ave Consumption (W/m <sup>2</sup> )	180		200						
Cabinet weight (kg)	18								
Maintenance	Front Side								
Cabinet material	Steel								
Front/Rear IP Level	IP45								
Color contrast ratio	5000:1								
Gray Grade	16bit								
Refresh Frequency (Hz)	1920HZ / 3840HZ								
Repetition Frequency (Hz)	50/60HZ								
View angle(V/H)	160° / 160°								
Best viewing distance (m)		2		2.5		3		4	
Working Voltage	AC110 / AC220V								
Working temperature( )	-30 ~ +80℃								
Operation humidity (RH)	0-95%								
Display Lifetime (hours)	≥100000								





## Features

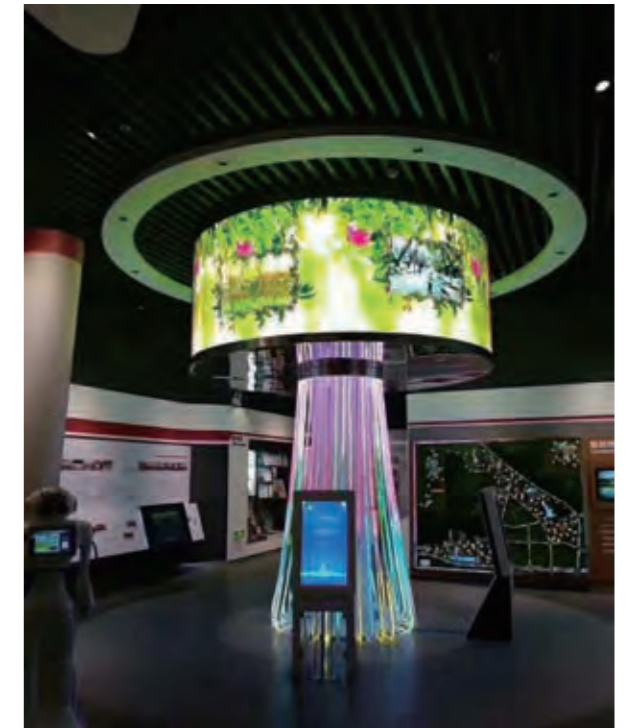
- Super wide viewing angle
- Customized shape and size
- High gray scale

Weight 18kg

## Case show



P1.875 In Beijing



P2.5 In Egypt



P2 In South Africa



P2 In Shanghai



Give your audience an eye-catching view from a 360-degree angle



## Indoor / Outdoor LED Ball

Pixel Pitch (PH)

P4

P4.81

Diameter ( m )	2 / 3.2 / 4	1.2 / 1.5 / 1.8 / 2.4 / 3 / 3.6
Scan Mode	1/16	
Pixel Configuration	3 in1	
LED lamps	SMD2121	
Pixel density ( pixel/m <sup>2</sup> )	62500	43264
Brightness ( cd/ m <sup>2</sup> )	1000	
Max Consumption ( W/m <sup>2</sup> )	700	
Ave Consumption ( W/m <sup>2</sup> )	250	
Maintenance	Front Side	
Cabinet material	Steel	
Front/Rear IP Level	IP45	
Color contrast ratio	5000:1	
Gray Grade	14bit	
Refresh Frequency ( Hz )	1920HZ / 3840HZ	
Repetition Frequency ( Hz )	50/60HZ	
View angle(V/H)	160° / 160°	
Best viewing distance ( m )	4	5
Working Voltage	AC110 / AC220V	
Working temperature( )	-30 ~ +80℃	
Operation humidity (RH)	0-95%	
Display Lifetime ( hours )	≥100000	





## Features

- Super wide viewing angle
- Customized diameter
- High gray scale

Pixel Pitch (PH)

P4

P5

P6

P8

P10

Diameter ( m )	3		2.5 / 3	3	2.5 / 3 / 5 / 6 / 10
Scan Mode	1/16	1/8	1/40	1/4	1/27
Pixel Configuration	3 in 1				
LED lamps	SMD1921	SMD2727		SMD3535	
Pixel density ( pixel/m <sup>2</sup> )	62500	40000	27777	15625	10000
Brightness ( cd/ m <sup>2</sup> )	1000				
Max Consumption ( W/m <sup>2</sup> )	700		800		
Ave Consumption ( W/m <sup>2</sup> )	250		310		
Maintenance	Front Side				
Cabinet material	Steel				
Front/Rear IP Level	IP45				
Color contrast ratio	5000:1				
Gray Grade	16bit				
Refresh Frequency (Hz)	1920HZ / 3840HZ				
Repetition Frequency (Hz)	50/60HZ				
View angle(V/H)	160° / 160°				
Best viewing distance ( m )	4	5	6	8	10
Working Voltage	AC110 / AC220V				
Working temperature( )	-30 ~ +80°C				
Operation humidity (RH)	0-95%				
Display Lifetime (hours)	≥ 100000				

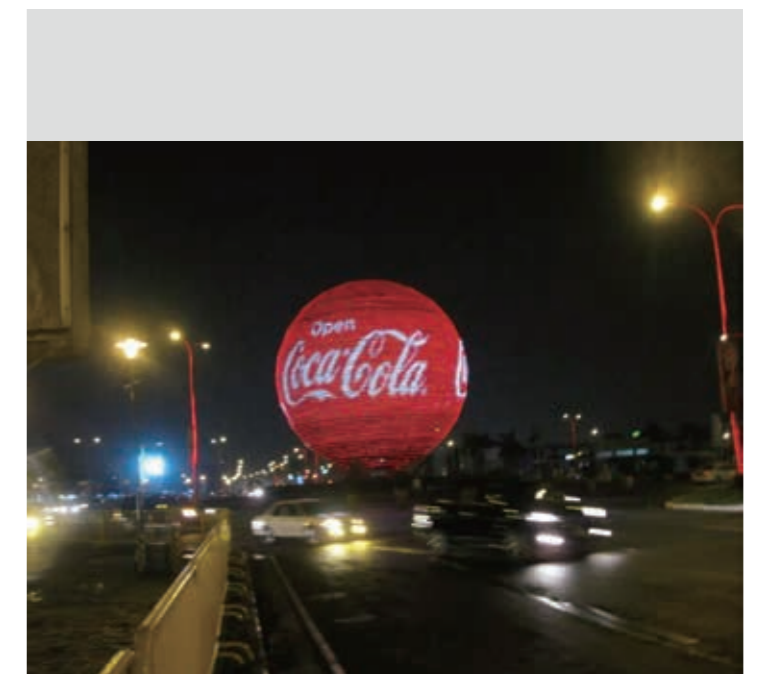
## Case show



P4.8, 1.5m Diameter LED Ball In Expo Astana 2017



P4.81, 2.4m Diameter



P10, 6m Diameter

# Memories With Customers

*Whether you are a large organization looking to rebrand multiple locations across the country, or a smaller business looking to create one showstopper LED display for your business location, we can help.*

