

70W Portable Explosion Proof LED Light w/ Inline Switch - Non-Spark Aluminum Base - Gen App Plug

Part #: EPL-BS-70LED-100-GAP



The EPL-BS-70LED-100-GAP from Larson Electronics is a Portable Explosion Proof LED Light that is rated Class I Divisions 1 and 2 Groups C & D and Class II Divisions 1 and 2 and produces 5,800 lumens of light while drawing only 70 watts.

The EPL-BS-70LED-100-GAP explosion proof LED light provides 4,500 square feet of work area coverage with 5,800 lumens of light output. It is available in 360° and 180° beam spreads. This portable LED light is mounted to a handheld aluminum frame with an explosion proof on/off switch on the back of the frame. The LED light head on this unit produces a brilliant flood pattern of light that is ideal for illuminating enclosed areas and hazardous locations where flammable vapors, gases and dusts may be present.

This explosion proof LED light fixture is comprised of a 70 watt LED light head mounted atop a base stand fabricated from non sparking spun aluminum with a convenient carrying handle built into the top of the stand. The aluminum frame features an explosion proof switch built into the cord wrap on the back of the unit. Included with this LED light is 100 feet of SOOW cord terminated in a choice of general area cord cap.

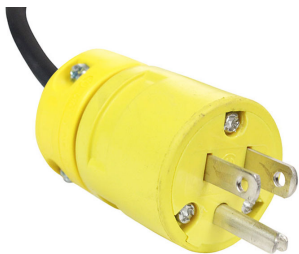
LED Benefits: Unlike gas burning and arc type lamps that have glass bulbs, LEDs have no filaments or fragile housings to break during operation and/or transportation. Instead of heating a small filament or using a combination of gases to produce light, light emitting diodes (LEDs) use semi-conductive materials that illuminate when electric current is applied, providing instant illumination with no warm up or cool down time before re-striking. Because there is no warm up period, this light can be cycled on and off with no reduction in lamp life.

LED lights run at significantly cooler temperatures than traditional metal halide and high pressure sodium lights and contain no harmful gases, vapors, or mercury, making them both safer and more energy efficient. No extra energy is wasted in cooling enclosed work areas due to external heat emissions from bulb type lights, and the operator risks associated with traditional lighting methods, such as accidental burns and exposure to hazardous substances contained in the glass bulbs, are eliminated. In addition, LEDs are also safer for the environment as they are 100% recyclable, which eliminates the need for costly special disposal services required with traditional gas burning and arc type lamps.

This unit is also universal voltage capable and can be configured to operate on 120-277V AC, 50/60 Hz. This lamp is T5 temperature rated and the LED light head retains 80% of its lumen output after 60,000 hours of use, far longer than incandescent or fluorescent lamps.

Note on Beam Spread: The 360° beam spread is the standard directional output and typical for flood lights. The 180° shines in only one direction. This is good for down lighting, wall packs and for not blinding oncoming traffic or pedestrians.

[Click Photos to Enlarge](#)



5-15 Straight Blade Plug
15 Amp / 125V Rated



L5-15 Twist Lock Plug
15 Amp / 125V Rated



L6-15 Twist Lock Plug
15 Amp / 250V Rated



UK BS1363 Straight Blade Plug
13 Amp / 250V Rated / Internal Fuse



Intl Schuko 2-Pin Plug
16 Amp / 250V Rated / Grounded



Flying Leads / Pigtail Wires

Wiring/Plug: This explosion proof LED light fixture is equipped with 100 feet of 16/3 chemical and abrasion resistant SOOW cord that is fitted with an industrial grade cord cap for easy connection to common wall outlets. Plug options include standard 5-15 15 amp straight blade plug for 110V wall outlets with ground, standard 6-15 15 amp straight blade plug for 220-240V wall outlets with ground, NEMA L5-15 15 amp twist lock plug for 125V twist lock outlets, NEMA L6-15 15 amp twist lock plug for 240V twist lock outlets, British BS1363 13 amp fused 3-blade plug for United Kingdom outlets, or a two pin 16 amp rated Schuko plug with ground contact and socket for European outlets up to 250V. Alternatively, we can provide flying leads with no plug for hard wire applications or for operators who prefer to wire in user provided cord caps. Please choose pigtail option below for flying leads with no plug.

PLEASE NOTE: While the light fixture on this unit is explosion proof, the included cord cap is NOT explosion proof and must be connected outside of the hazardous area.

At Larson Electronics, we do more than meet your lighting needs. We also provide replacement, retrofit, and upgrade parts as well as industrial grade power accessories. Our craftsmen can custom build any lighting system and/or accessories to fit the unique demands of your operation. A commitment to honesty, quality, and dependability has made Larson Electronics a leader in the lighting and electronics business since 1973. Contact us today at 800-369-6671 or message sales@larsonelectronics.com for more information about our custom options tailored to meet your specific industry needs.

Made in USA Quality

1. Approved Class I Divs 1-2 Class II Divs 1-2
2. LED lamp head requires no lamping
3. Durable Base Mount constructed of copper free aluminum
4. No ballast box. No ballast to replace.
5. Extreme long life LEDs reduce maintenance and replacement costs
6. 5,800 Lumens produced from only 70 watts
7. Mercury free shock proof LED lamp light head

Superior LED Benefits

1. 50,000+ hour lifespan.
2. Can SAVE 50% or more on energy.
3. 100% recyclable.
4. No toxins-lead, mercury.
5. No UV light, infrared radiation or CO2 emissions.
6. Bright, even light maintains consistent color over time.
7. Instant on/off - No flickering, delays or buzzing.
8. Very good color rendering.
9. Vibration/impact resistant.
10. Significantly cooler operation.
11. Less frequent outages, higher output improves workplace safety.

Specifications / Additional Information

EPL-BS-70LED-100-GAP Explosion Proof LED Light

UL Listing: United States

Dimensions: 15.25"H x 10.5"W x 9.25-D

Weight: 30 Lbs

Total Watts: 70 Watts

Voltage: 120-277V AC, 50/60Hz

LED Lamp Lumens: 5,800

LED Lamp Life Expectancy: 60,000+ Hours

Mounting: Aluminum Base Stand

Wiring: 100' 16/3 SOOW Cable w/ General Area Cord Cap

Cord Cap Options: 5-15 Straight, 6-15 Straight, L5-15 Twist, L6-15 Twist, UK BS1363, Intl. Schuko, Pigtail

Operating Temp Range: T5 Rated -40C to 65C

Color Temp: 6000K

Beam Spread: 360° or 180°

Warranty: YES - 3 Years*

Approvals/Ratings

Class I Divisions 1 & 2 Groups C & D

Class II Divisions 1 & 2 Groups E, F and G

UL Certified U.S. Standards

Choice of General Area Cord Cap

Explosion Proof Inline Switch

Special Orders- Requirements

Contact us for special requirements

Toll Free: 1-800-369-6671

Intl: 1-903-498-3363

E-mail: sales@larsonelectronics.com

[Scroll Down to Purchase-](#)

[This product does not qualify for free shipping.](#)

[Part #: EPL-BS-70LED-100-GAP \(148016\)](#)

Options:

EPL-BS-70LED-100-GAP- BEAM SPREAD - CORD CAP

Example: EPL-BS-70LED-100-GAP-60B-5.15

BEAM SPREAD		CORD CAP	
60 Degree	-60B	5-15 Straight	-5.15
125 Degree	-125B	6-15 Straight	-6.15
		L5-15 Twist	-L5.15
		L6-15 Twist	-L6.15
		UK BS1363	-BS1363
		Intl. Schuko	-Schuko
		Pigtail	-Pigtail









Links (Click on the below items to view):

- [Manual](#)
- [Hi-Res Image 1 - 70W Portable Explosion Proof LED Light w/ Inline Switch \(Main\)](#)
- [Hi-Res Image 2 - 70W Portable Explosion Proof LED Light w/ Inline Switch \(Front\)](#)
- [Hi-Res Image 3 - 70W Portable Explosion Proof LED Light w/ Inline Switch \(Side 1\)](#)
- [Hi-Res Image 4 - 70W Portable Explosion Proof LED Light w/ Inline Switch \(Side 2\)](#)
- [Hi-Res Image 5 - 70W Portable Explosion Proof LED Light w/ Inline Switch \(Back Switch\)](#)