



GUO JIA GROUP(HONGKONG)CO.,LIMITED
SHENZHEN GUOJIA PHOTOELECTRIC TECHNOLOGY CO.,LTD
Free Hotline: 400-666-2138
Email:1588875@qq.com
Web:WWW.LED158.com
Address:Guojia industrial zone,NO.2 Jianxin road
Heping Fuyong Baoan ,Shenzhen China



**TRANSPARENT
LED DISPLAY MANUFACTURER**

LED透明显示屏专业生产商
TRANSPARENT LED DISPLAY MANUFACTURER

有国才有佳 透明找国佳

COMPANY PROFILE 企业简介

深圳市国佳光电科技有限公司是国佳集团下属一级子公司，是由政府注册(注册资本5000万)专注LED制造、研发、设计、销售及工程服务为一体的高新技术企业。

公司主营LED透明屏，LED橱窗屏，LED天幕，LED灯杆屏及LED亮化及照明等应用产品。公司拥有专业生产设备与过硬的技术，行内资深、高素质、高标准的现代化管理队伍，高水平的专业技术开发人员，拥有多年的操作经验和训练有素、人数众多的熟练员工。公司严格执行7S管理标准和行业管理标准，先后通过ISO9001-2000/3C/CE/FCC/ROHS等质量体系认证，可靠的质量、先进的技术、完美的工艺、全自动化的配套生产设备、标准流水线生产，完善的销售网络和良好的售前售后服务是我们提供高质量产品和不断发展的根本。产品远销往北美、欧洲及中东各地区等海外市场，如瑞典、英国、意大利、德国、罗马尼亚、塞尔维亚、波兰、土耳其、以色列、西班牙、葡萄牙、美国、卡塔尔、俄罗斯、加拿大、新加坡等全球110个国家。

Shenzhen Guojia Optic-electronic Technology Co.,Ltd. is a subsidiary of Guojia Group. It is a high-tech enterprise (registered capital of 50 million) to focus on LED manufacturing, research and development, design, sales and engineering services.

The company's main products are LED transparent screen, LED window display screen, LED screen, LED lamp screen and LED lighting and other applications. The company has professional production equipment and excellent technology, senior and experienced management team, professional technical development staff, skilled and well-trained workers with many years of operating experience. The company strictly enforces the 7S management standards and industry standards, has passed ISO9001-2000 / 3C / CE / FCC / ROHS quality system certification, reliable quality, advanced technology, cutting-edge technology, fully automated production equipment, large sales network and good service are the fundamental elements that enable us to provide high-quality products. Our products are exported to North America, Europe and the Middle East and other overseas markets, such as Sweden, Britain, Italy, Germany, Romania, Serbia, Poland, Turkey, Israel, Spain, Portugal, the United States, cartels, Singapore and more than 110 countries.

CONTENTS 目录

02	企业文化 Company culture	13	玻璃幕墙LED透明屏系列 Glass media facade video wall
03	产品介绍 Product introduction	17	玻璃栈道LED特效透明屏 Interactive LED transparent screen
06	透明屏的优势 Advantages of transparent screen	19	异形LED透明屏系列 Customization transparent LED screen
07	公司掠影 Company snapshot	21	租赁LED透明屏系列 Transparent rental screen series
08	生产车间 Production Base	23	部分案例 Pojects
09	LED透明广告机系列 Transparent video totem	27	LED透明屏市场前景 Transparent LED screen market forecast



诚信 INTEGRITY 赢天下



COMPANY CULTURE 企业文化

▶ 公司理念

企业价值观:
现场管理——规范化
创新发展，追求卓越。

企业精神:
开拓、创新、求实、奉献。

发展目标:
创建具有国际竞争力的现代化企业

团队意识:
同心同德，团结拼搏；
精诚合作，携手共进。

▶ 经营理念

今天的质量就是明天的市场，
企业的信誉就是无形的市场，
顾客的满意就是永恒的市场。

▶ 管理理念

质量管理——标准化；
成本管理——市场化；
营销管理——网络化；
综合管理——人性化。

▶ 质量理念

产品合格是我们的责任，
品质卓越是我们的贡献；

▶ 育才观念

多换思想少换人；
以宽容之心纳人才，以爱护之情育人才；
不仅要培养“经济人”，
还要培养高层次的“道德人”。

▶ 用才观念

真诚求贤、求实用才；
你有多大的才能，就给你搭多大的舞台。

▶ COMPANY CONCEPT

Corporate values:
Innovation and development
The pursuit of excellence

Enterprise spirit:
Exploration, Innovation, Pragmatism, Dedication.

Development goals:
To create an internationally competitive modern enterprise

Team awareness:
One heart and one mind, united struggle

▶ BUSINESS PHILOSOPHY

Today's quality is tomorrow's market
The credibility of enterprises is an invisible market
Customer satisfaction is the eternal market

▶ MANAGEMENT CONCEPT

Quality management—standardization
Cost management—market-oriented
Marketing management—networking
Integrated management—humane

▶ QUALITY CONCEPT

Qualified products is our duty
Quality excellence is our contribution

▶ TALENT CONCEPT

Substitution for less ideological and more
TO tolerance satisfied talent
Not only to foster economic man
But also the training of high-level moral person

▶ PERSONNEL STANDARDS

Sincerely for talent, and practical only for
How much capacity you have, give you the stage.

PRODUCT INTRODUCTION 产品介绍



透明屏

透明LED显示屏顾名思义就是LED显示屏像玻璃一样具有透过光线的性质。具有高通透，超轻薄的特点，它的实现原理是对灯条屏的微小创新，对贴片制造工艺、灯珠封装、控制系统的都进行了针对性的改进，加上镂空设计的结构，减少了结构部件对视线的阻挡，最大限度的提高了透视效果。

同时还具有新颖独特的显示效果，观众站在理想距离观看，画面像悬浮于玻璃幕墙之上。LED透明屏让LED显示屏的应用版图扩大到建筑玻璃幕墙和商业零售橱窗这两大市场，成为了新媒体发展的一个新的走向。

伴随着户外广告LED显示屏泛滥而来的是一系列的负面问题，其中就包括城市形象问题。LED显示屏在工作的时候的确能起到亮化城市，发布信息的功能，但是在“休息”的时候就仿佛是城市的一块“伤疤”，与周围环境显得格格不入，极大地影响了城市的美观，破坏了城市的风景。

由于这些问题的出现，户外大屏安装的审批也变得越来越繁琐，户外广告的管理也愈加的严格。

透明LED显示屏不但集成了常规户外高清LED显示屏的所有优点，并且最大限度地消除了城市美观问题。因为它多数被安装在玻璃幕墙后面：即使在白天不工作的时候，也丝毫不会对周围的环境造成任何影响。同时，由于它采取的是一种室内广告户外传播的新形式，所以很好地规避了户外广告的审批。

另外，随着城市建设步伐的加快，玻璃幕墙这种高端大气上档次的建材也开始逐渐变得风行起来，透明屏凭借它轻薄、无需钢结构，安装维护简便，通透性能良好等特点，与玻璃幕墙可谓是一拍即合，应用于玻璃幕墙不仅毫无违和感，更是由于它的时尚、美观，富有现代感和科技气息，给城市建筑更增添了一份特别的美感。因此，LED透明屏在市场上赢得了大家的一致认可，受到了广泛的关注和热捧。

LED透明屏适用于中等面积使用的玻璃幕墙LED显示屏广告应用，在没有阳光直射的情况下可在白天使用，模组尺寸可根据玻璃幕墙规格定制，实现无缝拼接。只要有玻璃幕墙的地方。本产品就可应用。如银行，商场，剧院，商业街，连锁店，酒店，市政公共建筑，地标建筑等等。

TRANSPARENT SCREEN

Transparent screen: transparent LED display, just as its name implies, is a LED display that has the property to let light pass through, just like glasses. With high permeability, ultra-light features, it is an innovation of strip screen, and improvements on SMD manufacturing process, packaging and control system. With hollow structure design, eliminated components that blocking sight, the perspective effect is maximized.

At the same time, it also has unique display effect, when the audience standing at an ideal distance, the picture seems to suspend on the glass curtain wall. LED transparent screen let LED display to expand the application area to building glass wall and shopping window, it has become a new trend in new media market.

Along with the outdoor advertising, the LED screen is flooded with a series of negative issues, including urban image problems. LED display can play the function of city lighting and information spread, but in the off time it is like a piece of "city scar", misfit the surrounding environment, greatly affected the city's appearance, destroyed the city scenery.

As a result of these problems, the regulation and approval of outdoor large screen installation become more and more complicated, and the management of outdoor advertisement is becoming more and more strict.

Transparent LED display not only integrates all the advantages of the conventional outdoor high-definition LED display, but also eliminates the problem of urban image to the maximum. Because it is installed in the rear of the glass curtain wall, even if it is not working, it will not have any impact on the surrounding environment. At the same time, because it is indoor advertising to play to outdoor audiences, so it can avoid the approval of outdoor advertising.

In addition, with the development of city construction, glass curtain wall has gradually become popular, transparent Led display with its thin, no steel structure, easy installation and low maintenance, is becoming a best partner with glass curtain wall, not only it has no sense of intrusion, it is fashionable and beautiful, adding atmosphere of modern science and technology to the city building. Therefore, LED transparent screen in the market has won everyone's support, and received widespread attention.

LED transparent glass is suitable for medium size LED display advertising application, in the absence of direct sunlight conditions it can be used in daytime, module size can be customized for glass curtain wall to achieve seamless splicing. As long as there is a glass curtain wall, this product can be applied. Such as banks, shopping malls, theaters, commercial streets, chain stores, hotels, municipal public buildings, landmarks, etc.



ADVANTAGES OF TRANSPARENT SCREEN 透明屏的优势

高透明效果

High transparent effect

具有极高的透视率，具有60%—95%的通透率，保证了楼层之间、玻璃立面、窗户等采光结构的采光要求及视角范围，保证了玻璃幕墙原有的采光透视功能。

With high transparency rate of 60% - 95%, ensure the lighting requirements and angle between floors, glass windows, facade lighting structure.

无需钢架结构

No steel frame construction

节省大量安装和维护成本。直接固定于玻璃幕墙上。

Save a lot of installation and maintenance costs. Directly fixed on the glass curtain wall.

Unique display effect

独特的显示效果

因为显示背景是通透的，可以使广告画面给人悬浮在玻璃幕墙上的感觉，具有很好的广告效果和艺术效果。

Because the display background is transparent, the advertisement picture can be suspended on the glass curtain wall, shows good advertisement effect and artistic effect.

不占用空间，重量轻

Small space occupation, light weight

主板厚度仅10cm，显示屏屏体一般重量仅15Kg/m²。

The display thickness is only 10cm, the display screen body weight only 15Kg/m².

维护方便

Convenient maintenance

快捷室内维护，既快捷又安全，节省人力物力。

Indoor maintenance, quick and safe, save manpower and material resources.

Energy-saving & environment friendly

节能环保

不需要传统的冷冻系统和空调散热，比普通LED显示屏节能35%。

No traditional air conditioning cooling system, save more than 35% energy than ordinary LED display.



专业 专注

提供品质卓越的产品和优质的服务

Professional, dedicated, providing quality Products And Excellent Service

COMPANY SNAPSHOT
公司掠影



PRODUCTION BASE
生产车间



Transparent video totem LED透明广告机系列

坚固 通透 节能 易维护



Tech specs LED透明广告机技术参数

型号/Model	GJ-PH3.91	GJ-PH3.91	GJ-PH3.91	GJ-PH5	GJ-PH5
物理点间距/Pixel pitch	3.91mm-7.82mm	3.91mm-7.82mm	3.91mm-7.82mm	3.91mm-5mm	3.91mm-5mm
模块尺寸/Module size	L1000mm*H1500mm	L1000mm*H1750mm	L1000mm*H2000mm	L1000mm*H1500mm	L1000mm*H1750mm
像素密度/Pixel density	L256*H192	L256*H224	L256*H256	L256*H200	L256*H350
发光点颜色/Color	1R1G1B	1R1G1B	1R1G1B	1R1G1B	1R1G1B
最佳视距/ The optimal viewing distance	5-100m	5-100m	5-100m	5-100m	5-100m
通透率/Transparency	70%	70%	70%	65%	65%
最大视角/Viewing angle	120°-120°	120°-120°	120°-120°	120°-120°	120°-120°
屏体厚度/Thickness	8cm	8cm	8cm	8cm	8cm
平均功率/Average power	200w/m ²	200w/m ²	200w/m ²	200w/m ²	200w/m ²
最大功率/Max consumption	600W/m ²	600W/m ²	600W/m ²	600W/m ²	600W/m ²
刷新频率/Refresh rate	≥1920Hz	≥1920Hz	≥1920Hz	≥1920Hz	≥1920Hz
驱动方式/Drive mode	1/16S	1/16S	1/16S	1/16S	1/16S
白平衡亮度/White balance brightness	≥4000cd/m ²	≥4000cd/m ²	≥4000cd/m ²	≥4500cd/m ²	≥4500cd/m ²
平均无故障时间/Mean time of failure	≥6500	≥6500	≥6500	≥6500	≥6500
寿命/life	100000	100000	100000	100000	100000
安装方式/Installation	吊装/Hanging				
防护等级/Protection class	IP45	IP45	IP45	IP45	IP45

型号/Model	GJ-PH5	GJ-PH6.25	GJ-PH6.25	GJ-PH6.25	GJ-PH7.82
物理点间距/Pixel pitch	3.91mm-5mm	6.25mm-6.25mm	6.25mm-6.25mm	6.25mm-6.25mm	7.82-7.82mm
模块尺寸/Module size	L1000mm*H2000mm	L1000mm*H1500mm	L1000mm*H1750mm	L1000mm*H2000mm	L1000mm*H1750mm
像素密度/Pixel density	L256*H400	L160*H240	L160*H280	L160*H320	L128*H224
发光点颜色/Color	1R1G1B	1R1G1B	1R1G1B	1R1G1B	1R1G1B
最佳视距/ The optimal viewing distance	5-100m	8-100m	8-100m	8-100m	8-100m
通透率/Transparency	65%	75%	75%	75%	80%
最大视角/Viewing angle	120°-120°	120°-120°	120°-120°	120°-120°	120°-120°
屏体厚度/Thickness	8cm	8cm	8cm	8cm	8cm
平均功率/Average power	200w/m ²	150w/m ²	150w/m ²	150w/m ²	150w/m ²
最大功率/Max consumption	600W/m ²	450W/m ²	450W/m ²	450W/m ²	450W/m ²
刷新频率/Refresh rate	≥1920Hz	≥1920Hz	≥1920Hz	≥1920Hz	≥1920Hz
驱动方式/Drive mode	1/16S	1/8S	1/8S	1/8S	1/8S
白平衡亮度/White balance brightness	≥4500cd/m ²	≥4500cd/m ²	≥4500cd/m ²	≥4500cd/m ²	≥4500cd/m ²
平均无故障时间/Mean time of failure	≥6500	≥6500	≥6500	≥6500	≥6500
寿命/life	100000	100000	100000	100000	100000
安装方式/Installation	吊装/Hanging				
防护等级/Protection class	IP45	IP45	IP45	IP45	IP45



TRANSPARENT LED DISPLAY MANUFACTURER
LED透明显示屏专业生产商

商业橱窗和公共建筑空间:

在连锁品牌店, 大型商场, 展览中心, 机场, 地铁站, 高铁站, 汽车4S店, 珠宝展示店, 银行等室内环境中, 理想保留了空间的视觉深度, 让LED透明屏的显示效果更具视觉冲击力和层次感。

Trade display windows and public building space

Glass curtain wall gain a good space visual effect indoor, such as in chain store, shopping mall, exhibition center, airport, metro station, automobile 4S shop, jewelry store, bank etc. which brings strong visual impact and sense of hierarchy for LED transparent display.

► Glass media facade video wall 玻璃幕墙LED透明屏系列



► 轻薄、无需钢结构

超轻薄屏体, 12kg~15kg/箱体, 可直接依附于原玻璃幕墙龙骨结构安装, 无需额外安装钢结构, 节省空间和安装成本;

Light Thin, Without Steel Structure

Ultra Light Thin Screen Body, 12kg~15kg/Box Body, Can be Directly Attached to the Original Glass Curtain Wall Keel Structure Installation, Without Additional Installation of Steel Structure, Saving Space and Installation Costs;

► 室内安装, 室外观看

屏体室内安装, 易维护, 更安全; 室外观看, 不需要建筑设计院审核, 或轻松通过审核;

Indoor Installation, Outdoor Viewing

Screen Body Indoor Installation, Easy to Maintain, More Secure; Outdoor Viewing, Do not Need Architectural Design Institute Audit, or Easily Passed the Audit;

► LED Transparent Display Specifications LED透明屏技术参数

型号/Model	GJ-PH3.91		GJ-PH5		GJ-PH6.25		GJ-PH7.82		GJ-7.82		
物理点间距/Pixel pitch	3.91mm-7.82mm		3.91mm-5mm		6.25mm-6.25mm		7.82mm-7.82mm		7.82mm-15.64mm		
模块尺寸/Module size	500mm*1000mm 1000mm*1000mm		500mm*1000mm 1000mm*1000mm		500mm*1000mm 1000mm*1000mm		500mm*1000mm 1000mm*1000mm		500mm*1000mm 1000mm*1000mm		
像素密度/Pixel density	32768px/m ²		51200px/m ²		25600px/m ²		16384px/m ²		8192px/m ²		
发光点颜色/Color	1R1G1B		1R1G1B		1R1G1B		1R1G1B		1R1G1B		
最佳视距/The optimal viewing distance	5-100m		5-100m		8-100m		8-100m		10-100m		
通透率/Transparency	70%		65%		70%		75%		80%		
重量/Weight	15KG/m ²		15KG/m ²		15KG/m ²		15KG/m ²		14KG/m ²		
最大视角/Viewing angle	120°-120°		120°-120°		120°-120°		120°-120°		120°-120°		
屏体厚度/Thickness	8cm		8cm		8cm		8cm		8cm		
平均功率/Average power	100w/m ²	200w/m ²	100w/m ²	200w/m ²	100w/m ²	200w/m ²	100w/m ²	200w/m ²	200w/m ²		
最大功率/Max consumption	300W/m ²	600W/m ²	300W/m ²	600W/m ²	300W/m ²	600W/m ²	300W/m ²	600W/m ²	600W/m ²		
刷新频率/Refresh rate	≥1920Hz	≥3840Hz	≥1920Hz	≥3840Hz	≥1920Hz	≥3840Hz	≥1920Hz	≥3840Hz	≥1920Hz		
驱动方式/Drive mode	1/16S	1/8S	1/16S	1/8S	1/16S	1/8S	1/8S	1/4S	1/1S		
白平衡亮度/White balance brightness	≥1200cd/m ²	≥5000cd/m ²	≥1500cd/m ²	≥5000cd/m ²	≥1500cd/m ²	≥5000cd/m ²	≥1500cd/m ²	≥5000cd/m ²	≥5000cd/m ²		
平均无故障时间/ Mean time of failure	≥6500	≥6500	≥6500	≥6500	≥6500	≥6500	≥6500	≥6500	≥6500		
寿命/life	100000	100000	100000	100000	100000	100000	100000	100000	100000		
安装方式/Installation	吊装/叠装 Hanging or stacking										
防护等级/Protection class	IP45	IP45	IP45	IP45	IP45	IP45	IP45	IP45	IP45		
型号/Model	GJ-10.4		GJ-PH15.64		GJ-PH20		GJ-PH25		GJ-PH31.25		GJ-PH40
物理点间距/Pixel pitch	10.4mm-10.4mm		15.64mm-15.64mm		20mm-20mm		25mm-25mm		31.25mm-31.25mm		40mm-40mm
模块尺寸/Module size	500mm*1000mm 1000mm*1000mm		500mm*1000mm 1000mm*1000mm		500mm*1000mm 1000mm*1000mm		500mm*1000mm 1000mm*1000mm		500mm*1000mm 1000mm*1000mm		500mm*1000mm 1000mm*1000mm
像素密度/Pixel density	9216px/m ²		4096px/m ²		2500px/m ²		1600px/m ²		1024px/m ²		625px/m ²
发光点颜色/Color	1R1G1B		2R2G2B		2R2G2B		2R2G2B		2R2G2B		2R2G2B
最佳视距/The optimal viewing distance	15-120m		20-150m		25-150m		30-180m		35-180m		40-200m
通透率/Transparency	80%		85%		88%		90%		92%		95%
重量/Weight	14KG/m ²		14KG/m ²		13KG/m ²		13KG/m ²		12KG/m ²		12KG/m ²
最大视角/Viewing angle	120°-120°		120°-120°		120°-120°		120°-120°		120°-120°		120°-120°
屏体厚度/Thickness	8cm		8cm		8cm		8cm		8cm		8cm
平均功率/Average power	200w/m ²		200w/m ²		200w/m ²		200w/m ²		200w/m ²		200w/m ²
最大功率/Max consumption	600W/m ²		600W/m ²		600W/m ²		600W/m ²		600W/m ²		600W/m ²
刷新频率/Refresh rate	≥1920Hz		≥1920Hz		≥1920Hz		≥1920Hz		≥1920Hz		≥1920Hz
驱动方式/Drive mode	1/1S		1/1S		1/1S		1/1S		1/1S		1/1S
白平衡亮度/White balance brightness	≥5000cd/m ²		≥5000cd/m ²		≥5000cd/m ²		≥5000cd/m ²		≥5000cd/m ²		≥5000cd/m ²
平均无故障时间/ Mean time of failure	≥6500		≥6500		≥6500		≥6500		≥6500		≥6500
寿命/life	100000		100000		100000		100000		100000		100000
安装方式/Installation	吊装/叠装 Hanging or stacking										
防护等级/Protection class	IP45	IP45	IP45	IP45	IP45	IP45	IP45	IP45	IP45	IP45	

APPLICATION SCENE

应用场景

大型建筑玻璃幕墙

大型建筑玻璃幕墙应用, 在不影响用户采光前提下, 以高清炫酷, 全息效果的显示以及智慧互动功能, 完美实现了不影响建筑本身外观同时融入更加和谐的显示创意效果。

Large building glass curtain wall

With high transparent effect and showing in lively HD and holographic effect as well as intelligent interactive function, the application of large building glass curtain wall achieved in mixing harmonious and innovative display effect without changing any building structure



- 

通透性高
High permeability
- 

视角超广
Perspective of ultra wide
- 

超薄超轻
Ultra-thin ultra-light
- 

智能控制
Intelligent control
- 

安装简单
Simple installation
- 

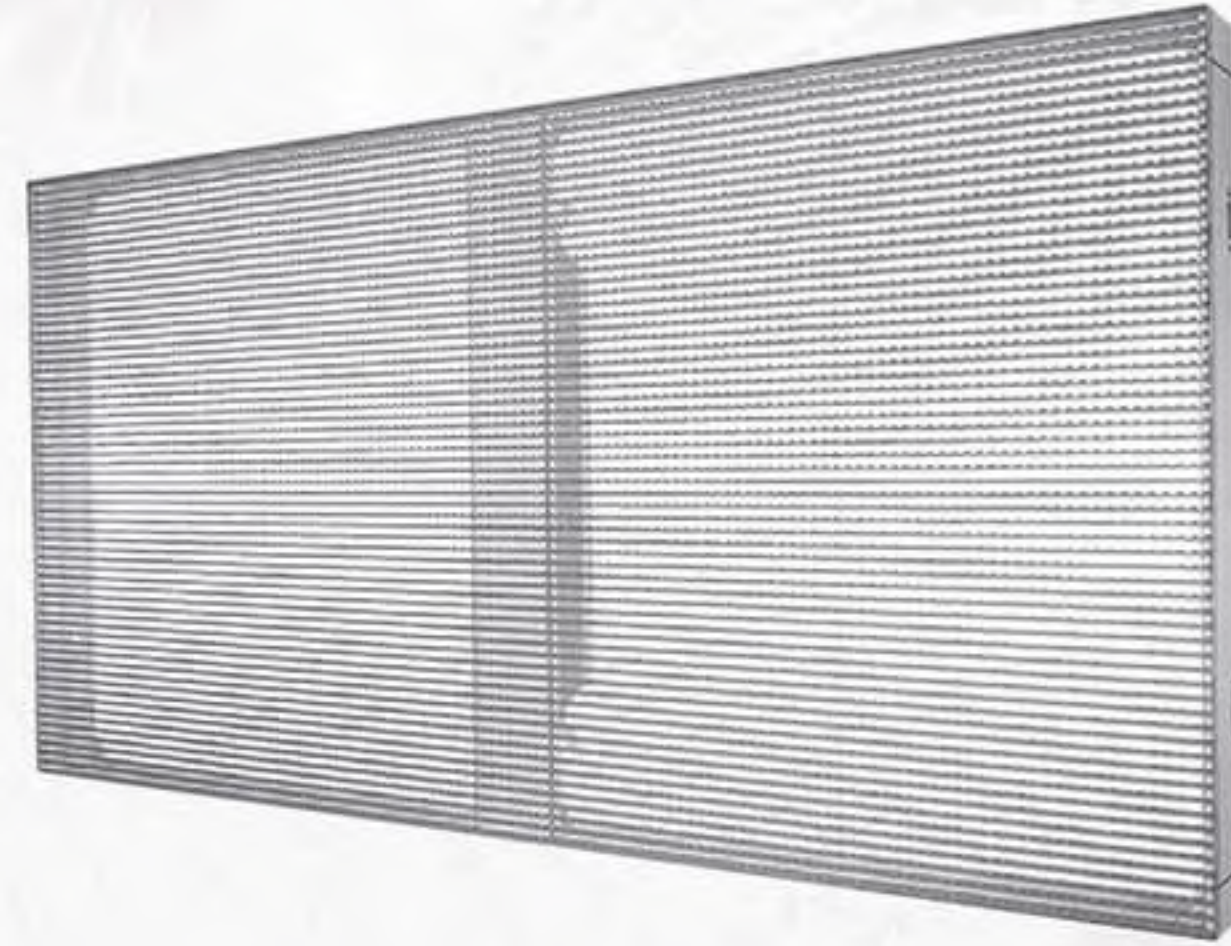
完美视觉体验
Perfect visual experience



INTERACTIVE LED TRANSPARENT SCREEN 玻璃栈道LED特效透明屏

“蜀道难，难于上青天”，可沿着栈道行走，却能将壮丽景色尽收眼中，实是人生一大乐事。那么，你是否希望给这乐事再添一些刺激呢？

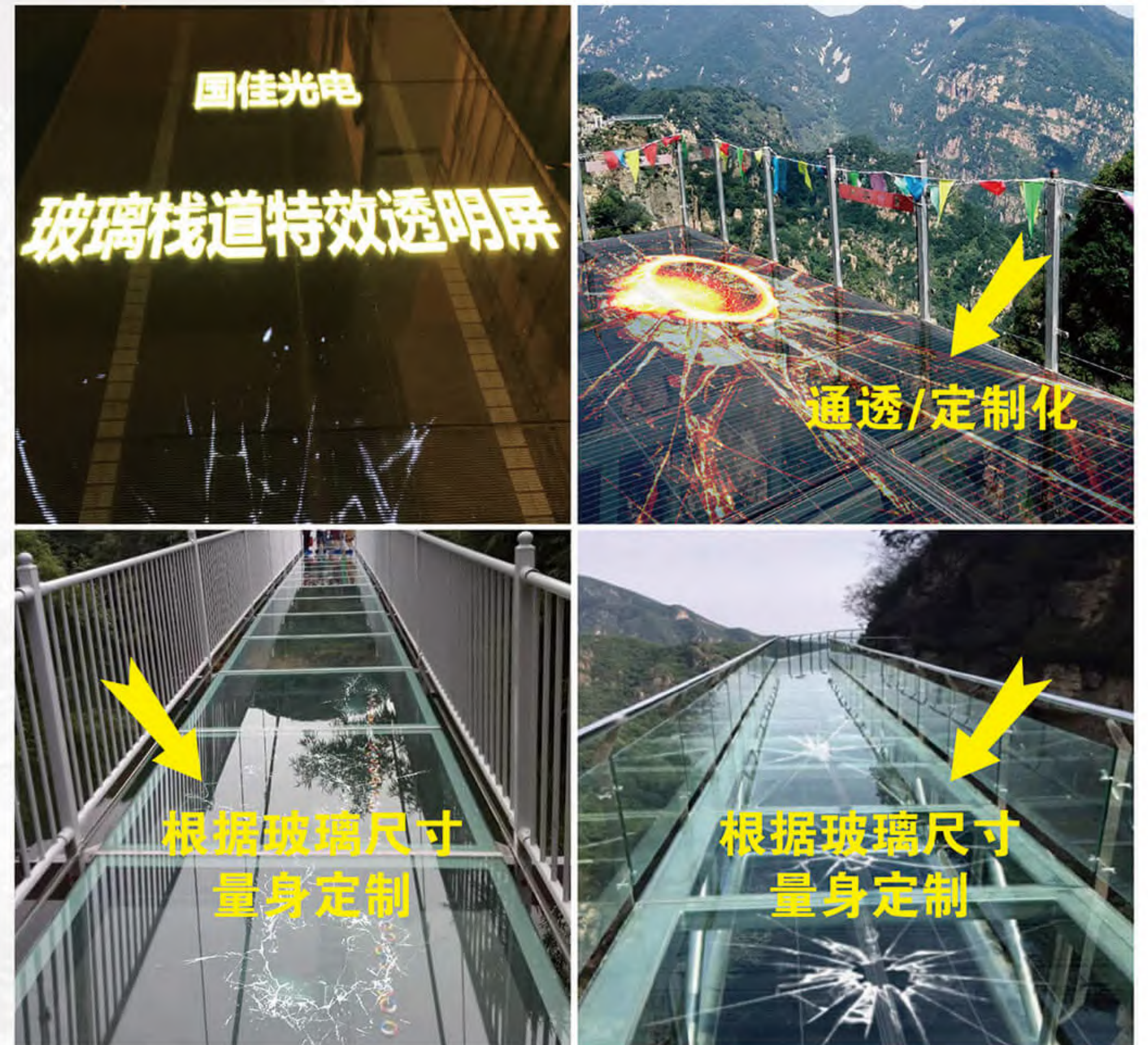
透明LED特效显示屏依附在玻璃栈道底部的龙骨上安装，具有高通透度的透明屏与玻璃相结合，不会给观赏景观造成困扰。但是，当你的脚下时，走到哪玻璃碎到哪，要么犹如坠入万丈深渊，LED特效透明屏通过和玻璃栈道互动，实现“玻璃碎裂”等视觉效果，让游客震惊，从而留下深刻印象。



型号/Model	GJ-PH3.91	GJ-PH5	GJ-PH6.25	GJ-PH7.82
物理点间距/Pixel pitch	3.91mm-7.82mm	3.91mm-5mm	6.25mm-6.25mm	7.82mm-7.82mm
模块尺寸/Module size	定制	定制	定制	定制
像素密度/Pixel density	32768px/m ²	51200px/m ²	25600px/m ²	16384px/m ²
发光点颜色/Color	1R1G1B	1R1G1B	1R1G1B	1R1G1B
通透率/Transparency	75%	70%	75%	85%
重量/Weight	15KG/m ²	15KG/m ²	15KG/m ²	15KG/m ²
最大视角/Viewing angle	120° ~ 120°	120° ~ 120°	120° ~ 120°	120° ~ 120°
屏体厚度/Thickness	8cm	8cm	8cm	8cm
平均功率/Average power	200w/m ²	200w/m ²	200w/m ²	200w/m ²
最大功率/Max consumption	600W/m ²	600W/m ²	600W/m ²	600W/m ²
刷新频率/Refresh rate	≥1920Hz	≥1920Hz	≥1920Hz	≥1920Hz
驱动方式/Drive mode	1/8S	1/8S	1/8S	1/4S
白平衡亮度/White balance brightness	≥5000cd/m ²	≥5000cd/m ²	≥5000cd/m ²	≥5000cd/m ²
平均无故障时间/Mean time of failure	≥6500	≥6500	≥6500	≥6500
寿命/life	100000	100000	100000	100000
安装方式/Installation	叠装 Hanging or stacking			
防护等级/Protection class	IP45	IP45	IP45	IP45

APPLICATION SCENE 应用场景

适用于景区玻璃栈道，玻璃桥，观景平台，展厅等场所。



CUSTOMIZATION TRANSPARENT LED SCREEN

异形LED透明屏系列

异形LED透明屏能更好的适应建筑物的整体结构和环境，它的大小和尺寸可按照要求来订做，屏体结构和造型可定制化（球形/弧形/圆柱形等）可根据实际工程项目需求由工程师创意发挥，定做屏体外观，异形LED透明屏可任意形状，并实现无缝拼接。

Customization Transparent LED screen can be better adapted to the overall structure of the buildings and environment, Size can be customized according to the different requirements, we can do customized screen body and structure design(such as spherical/arc/cylindrical) according to the actual project requirements by our engineer's creative idea, in order to match different customer's requirement we can make different screen body appearance, to make all shape all size and seamless installation.

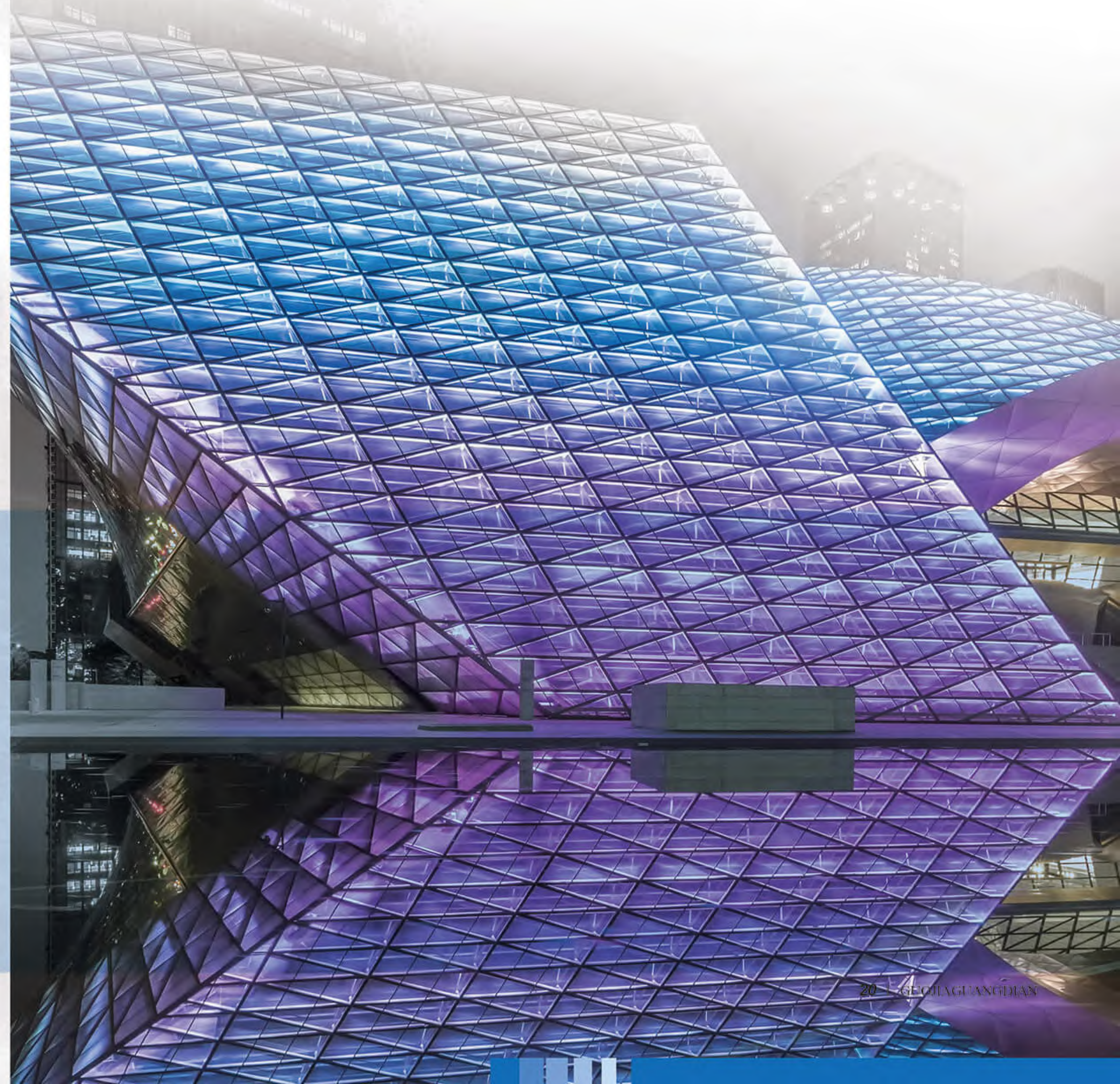


应用场景

大型商场，展馆、体验中心、天幕、建筑中庭，总部大楼、机场、科技馆等等。

APPLICATION

shopping malls, exhibition halls, show case centers, multi-media ceiling, Building atrium, Company HQ, airport, museum.



TRANSPARENT RENTAL SCREEN SERIES

租赁LED透明屏系列

超轻: 重量仅15kg/m², 可单手提, 安装异常轻松;
超薄: 厚度仅7mm, 采用压铸铝, 韧性强、不变形;
兼容: 全新结构设计, 满足吊装、叠装、户内外要求;
快捷: 箱体采用快速锁紧结构, 安装精度高;

Ultralight: 15kg/m², can be easily installed

Ultrathin: Thickness 7mm, die casting aluminum body, durable, not deformation.

Compatible: New structure design, hang up or fixed install, suitable for indoor and outdoor environment;

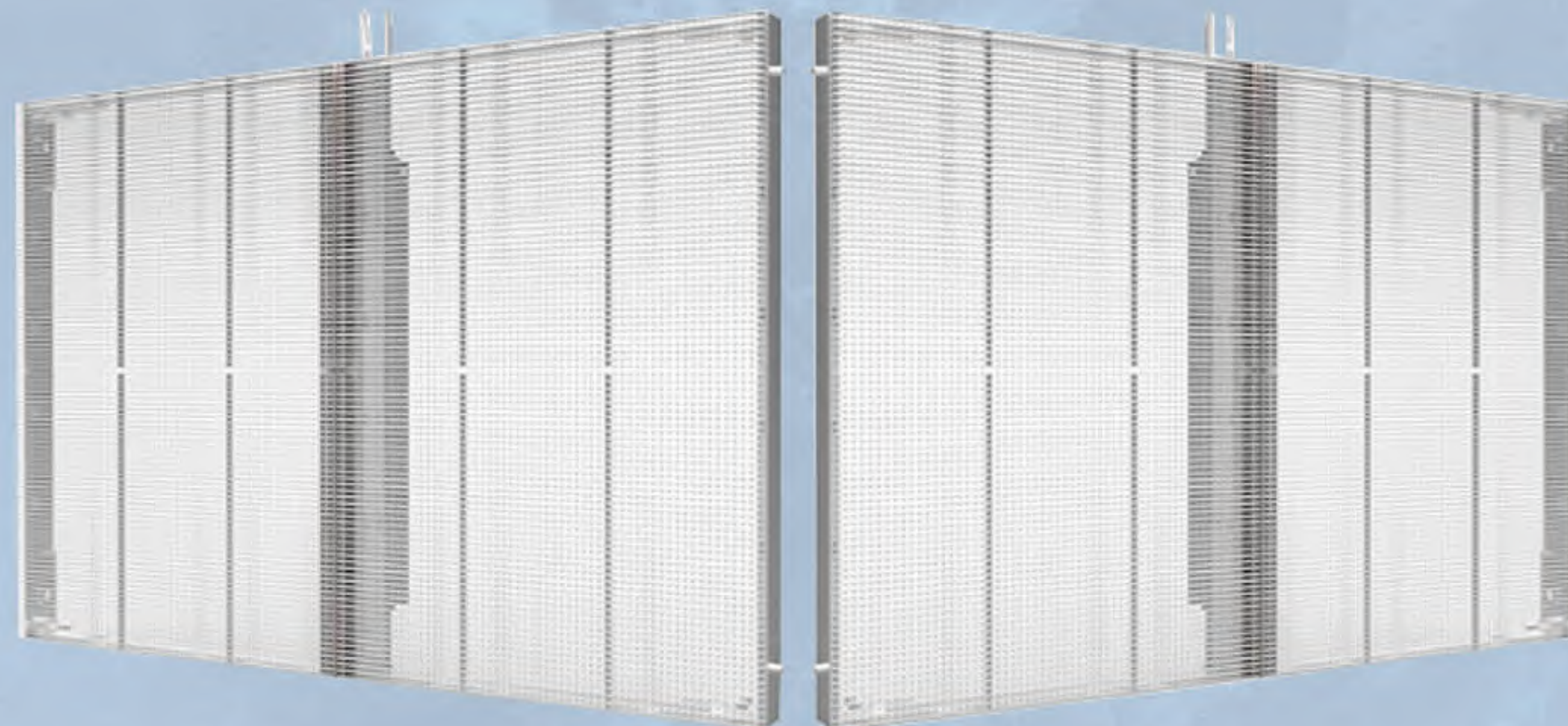
Quickness: The box body adopts fast locking system and highly installation precision

应用场景

大型演唱会, 发布会, 节日晚会, 展会等场所。

APPLICATION SCENE

Application scene: It is Suitable for use to Large Concerts, Conferences, Festival Social Evening, Exhibition and etc.



LED租赁透明屏突破传统样式 营造舞美空间感

近年来, 我们开始看到一些大型的舞美演唱会等场所出现了LED透明屏的身影, 如中国接入国际互联网22年主题晚会、杭州的G20峰会, 到天后王菲“幻乐一场”演唱会等等, 通过LED透明屏营造一种空间艺术效果, 将梦幻的意境呈现在观众的眼前, 也吸引了不少舞美创作者的眼球, 让我们看到了LED透明屏在舞美领域的应用空间。特别是, 当下现代社会的发展, 舞台美术亟需突破传统的舞台样式, 走向了更大的生存空间, 即大型演艺活动。大型演艺活动, 尤其需要充分展现高科技因素, 一旦介入艺术领地, 将会大大改变观众常规欣赏习惯, 拓展美术展示的空间, 调整人们的审美价值观。而LED透明屏的出现, 正切合了当下舞美对于实现虚实视觉空间的需求。LED透明显示屏可根据舞台造型多样化搭建, 屏幕错落有致的悬挂, 表现整体纵深式的舞台框架, 利用屏体自身通透、轻薄、炫彩特点, 产生很强的透视效果, 使整个画面的景深变长。同时完全不阻碍舞台设计留给灯光悬挂和发挥的空间, 给整个舞台渲染了一定的气氛和动感, 更能表达出了主题。未来随着LED透明屏技术的不断完善, LED透明屏的租赁之路或将会实现更大的发展空间。

LED transparent screen to break the traditional style to create a sense of dance space

In recent years, we began to see some large-scale dance performances and other places appear LED transparent screen figure, such as China's access to the Internet 22 years of thematic events, the G20 Summit in Hangzhou, to the days of Faye Wong, "Huan Leichi" concert And so on, through the LED transparent screen to create a space art effect, the dream of the mood presented in front of the audience, but also attracted a lot of Wumei creators eye, let us see the LED transparent screen in the field of dance and the application of space. In particular, in the current era of the development of modern society, stage art desperately needs to break through the traditional stage style and move toward greater living space, namely large-scale performing arts activities. Large-scale performing arts activities, in particular, need to fully demonstrate the high-tech factors, once involved in art territory, will greatly change the audience to appreciate habits, expand the space for art exhibition, adjust people's aesthetic values. The emergence of LED transparent screen, is in line with the current stage for the United States and the United States to achieve the visual space needs. LED transparent display can be based on the stage modeling diversified structures, the screen patchwork suspension, the performance so that the overall depth of the stage frame, the use of screen itself transparent, thin, colorful features, resulting in strong perspective so that the entire screen The depth of field becomes longer. At the same time, it does not hinder the stage design from leaving the space for light to hang and play. It gives the whole stage a certain atmosphere and movement, and can express the theme more. With the future of LED transparent screen technology continues to improve, LED transparent screen rental or road will be greater room for development.

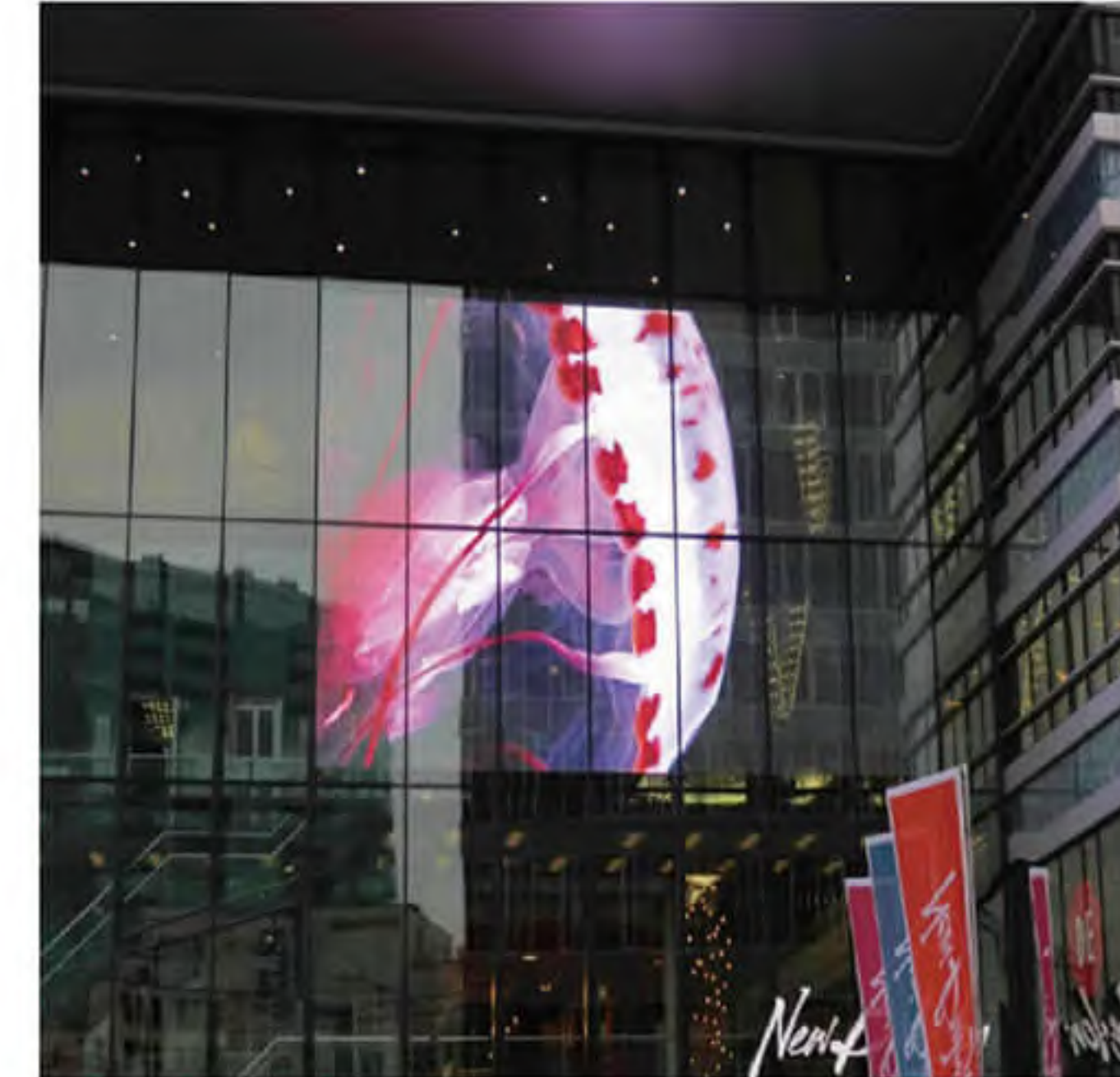


▶ PROJECTS
部分案例

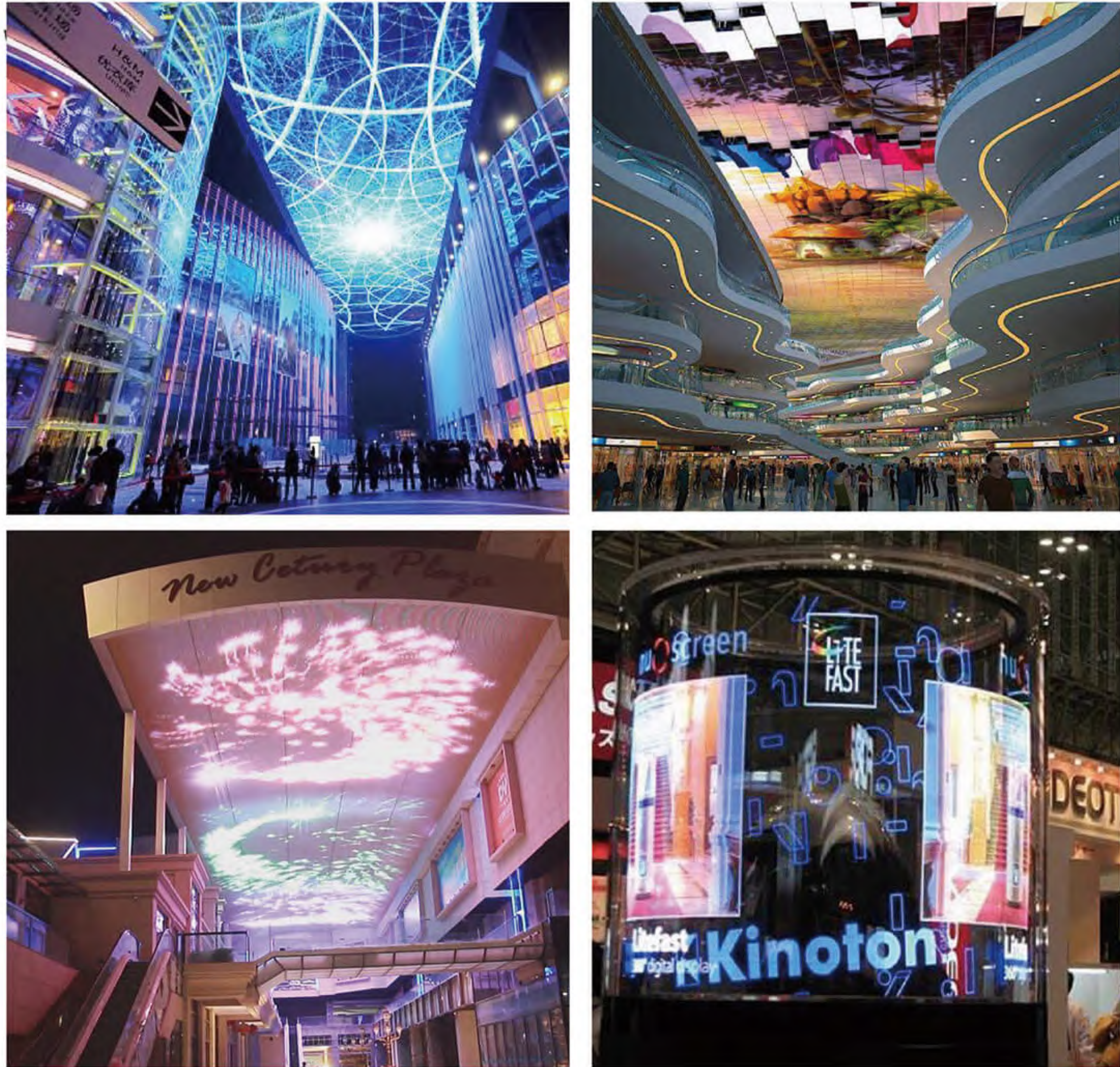
Transparent video totem



Glass media facade video wall



Customization Transparent LED screen



Transparent rental screen series



▶ TRANSPARENT LED SCREEN MARKET FORECAST LED透明屏市场前景

近两年来，LED透明屏开始在室内、户外、商显、舞台领域大放光彩。凭借新颖、透明度高、科技感强，以及与环境更贴合等种种特点，LED透明屏迅速得到高端商显市场，以及时尚、科技场所的青睐，开辟了一条专属路径，在竞争激烈的市场中占据独特的地位。

虽说目前LED透明屏达不到100%的透明率，但半透明的特性，仍能给人几近透明的视觉体验，在不亮的情况下，与建筑外墙浑然一体，大大减少了对建筑外观的影响。由此，近年来越来越多商家都选择了LED透明屏来装点玻璃幕墙建筑，大型购物中心、科技型企业等场所尤甚。而在商显方面，时尚品牌、高端产品也多喜欢用LED透明屏来衬托品牌和产品的格调。播放宣传内容时，背景透明不仅可以增加科技感，更能凸显产品本身，令汽车、时尚服装、珠宝等高端品牌对透明屏多有青睐。

有别于以往显示屏笨重规整的外观，LED透明屏轻薄美观的特性将继续助其开拓更广阔的市场。早在2012年就有美国调查机构预测过，到2025年透明显示的市场产值约872亿美元。在如今商显、舞台显示、户外数字广告等各领域显示需求与日俱增的形势下，LED透明屏的市场体量也将越来越大，因此，LED透明屏的市场发展前景非常的广阔，其未来的发展潜力无可限量。

In the past two years, LED transparent screen began to shine on both indoor and outdoor site, commercial and stage areas. With innovation, highly transparency, strong sense of science and technology, and more in line with the environment, LED transparent screen quickly get high-end commercial display market. As well as fashion, science and technology establishments of all ages, opened up a dedicated path in a highly competitive market.

The translucent features, can give people amazing visual experience, the brightness, seamless with the building exterior, greatly increase the appearance of building. More and more businesses have chosen LED transparent screen to decorate the glass curtain wall construction.

In the commercial area, it more suits for fashion brands, high-end products. They all like transparent LED screen to bring the style of the brand and products. When playing promotional content, the transparent background not only increases the sense of technology, but also highlights the product itself, making high-end brands such as automobiles, fashion clothing and jewelry more attractive by our transparent screen.

Different from the bulky appearance of the old style LED display, the thin and beautiful LED transparent screen features will continue to help develop the market. As early as 2012, the U.S. investigation agency predicted that by 2025 the market output will be about 87.2 billion U.S. dollars. In today's commercial display, stage display, outdoor digital advertising and other fields show growing demand situation, LED transparent screen market volume will also be more and more, therefore, LED transparent screen market prospects are very broad, its future The potential for development is limitless.