

The most popular  
workplace  
on **five** wheels



Commercial  
Vehicles



For over 17 years, we've made Norway's most popular workplace on four wheels. Now, we've finally made something for those of you who are stuck in office jobs.

# The feeling of a car

The chair is designed to give those who work in an office a feeling of what it's like to have a car from Volkswagen Commercial Vehicles as your workplace. You can drive, honk, and listen to music – even signal as you take a turn into a meeting room. Its driving capabilities might not measure up to the real thing, but luckily, you can still find all our cars on [volkswagen.no](http://volkswagen.no)

Take a seat –  
take a drive.  
The chair gives  
office worker a  
sense of  
freedom like  
never before.





## Efficient through the office landscape

With an estimated range of 12 km you can breeze to and from the coffee machine and meetings throughout the day. And with a top speed of 20 km/h you're guaranteed to be first in line for lunch. Are you one of those who'd like a bit more range? ID. Buzz Cargo has an estimated range of 423 km.



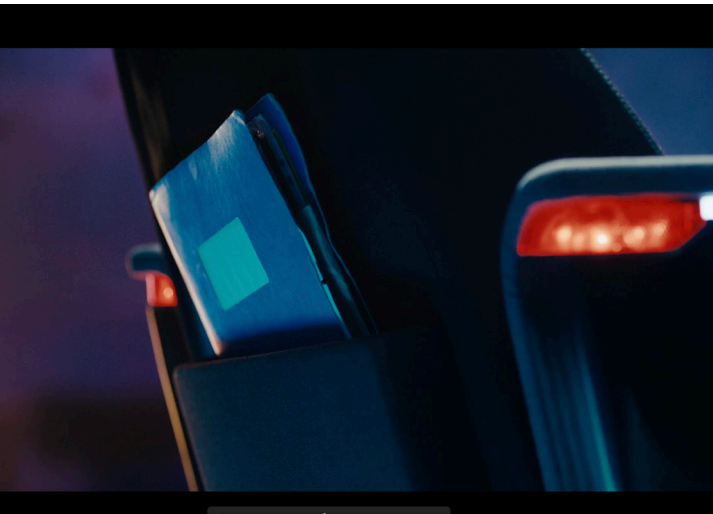
Rest your arms and play some tunes while you're at it.

The entertainment system is pre-loaded with road trip songs.

# Cargo in the office

The chair as a practical trunk in the back with 0,005 m<sup>3</sup> of space. Perfect for things like a laptop, quarterly reports, and other documents we assume are relevant to an office job. If you're hauling more documents than the trunk can handle, the trailer hitch enables you to drag them all around the office with ease.

Want room for even more stuff? Volkswagen Crafter has a storage compartment of up to 18,4 m<sup>3</sup>.



Goodbye  
briefcase,  
hello trunk.



## Brighten up your dark workday

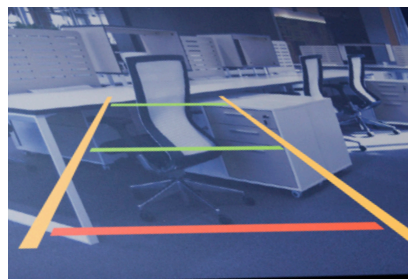
The LED lights is the main feature of the chair's exterior, and gives you the recognizable VW-look. With the headlights you can brighten even your darkest overtime evening, and if an office party suddenly breaks out, you'll quickly be the center of attention and create a very, very cool vibe with the chair's Office Party Lights.

Despite the lights, the chair is not approved for the road. For that sort of use, we'd recommend you take a look at I.D Buzz Cargo, some would even say its lights are even cooler.



# Keep your boss at a distance

The office can be a dangerous place, with bosses and colleagues constantly sneaking up on you. With Office Assistance like a rear-view camera and 360° sensors, you're fully aware of all threats and potential disturbances. If you're more concerned about safety in traffic, check out all our Driver Assist Systems at [volkswagen.no](http://volkswagen.no)



Are they laughing at you behind your back,  
literally? Now you always know



Let everyone know you're working in a Volkswagen – the best workplace on five wheels

## Test Drive

**Sadly, the chair is one-of-a-kind and exists as a display model only – simply because we will always prioritize people who actually need a car for work. But you can test drive the chair at certain dealerships and events throughout Norway. Contact us on social media for more information.**

# Standard Equipment

---

- All-electric engine (Estimated Range 12km)
- Comfortable seat with embraided VW-logo
- Seat warmer
- Touchscreen
- Modern exterior with metallic paint
- Rear-view camera and 360° sensors
- HiFi speaker system, pre-loaded with road trip songs
- Two-wheel drive (see our cars for four-wheel drive)
- 4" aluminum rims
- Pedal-steering
- LED lights, signal lights, Office Party Lights
- Car horn
- USB charger
- Detachable, chargeable battery
- Storage compartment (0,005 m3)
- Trailer Hitch

